



# State of Kansas Housing Report



## Market Overview

### Kansas Home Sales Fell in January

Total home sales in the state of Kansas fell last month to 2,491 units, compared to 2,602 units in January 2021. Total sales volume was \$648.6 million, up from a year earlier.

The median sale price in January was \$205,000, up from \$200,000 a year earlier. Homes that sold in January were typically on the market for 11 days and sold for 100.0% of their list prices.

### Kansas Active Listings Down at End of January

The total number of active listings in the state of Kansas at the end of January was 3,274 units, down from 4,211 at the same point in 2021. This represents a 0.9 months' supply of homes available for sale. The median list price of homes on the market at the end of January was \$219,500.

During January, a total of 2,620 contracts were written down from 3,219 in January 2021. At the end of the month, there were 4,516 contracts still pending.

## Report Contents

- Summary Statistics – Page 2
- Closed Listing Analysis – Page 3
- Active Listings Analysis – Page 7
- Months' Supply Analysis – Page 11
- New Listings Analysis – Page 12
- Contracts Written Analysis – Page 15
- Pending Contracts Analysis – Page 19

## Contact Information

Karen Gehle, Chief Executive Officer  
 Kansas Association of REALTORS®  
 3644 W. Burlingame Road  
 Topeka, KS 66611  
 800-366-0069  
[ceo@kansasrealtor.com](mailto:ceo@kansasrealtor.com)  
[www.kansasrealtor.com](http://www.kansasrealtor.com)



## State of Kansas Summary Statistics

January MLS Statistics Three-year History		Current Month			Year-to-Date		
		2022	2021	2020	2022	2021	2020
<b>Home Sales</b>		<b>2,491</b>	<b>2,602</b>	<b>2,255</b>	<b>2,491</b>	<b>2,602</b>	<b>2,255</b>
Change from prior year		-4.3%	15.4%	10.1%	-4.3%	15.4%	10.1%
<b>Active Listings</b>		<b>3,274</b>	<b>4,211</b>	<b>8,121</b>	<b>N/A</b>	<b>N/A</b>	<b>N/A</b>
Change from prior year		-22.3%	-48.1%	-14.0%			
<b>Months' Supply</b>		<b>0.9</b>	<b>1.1</b>	<b>2.4</b>	<b>N/A</b>	<b>N/A</b>	<b>N/A</b>
Change from prior year		-18.2%	-54.2%	-14.3%			
<b>New Listings</b>		<b>2,606</b>	<b>3,241</b>	<b>3,569</b>	<b>2,606</b>	<b>3,241</b>	<b>3,569</b>
Change from prior year		-19.6%	-9.2%	-2.9%	-19.6%	-9.2%	-2.9%
<b>Contracts Written</b>		<b>2,620</b>	<b>3,219</b>	<b>2,908</b>	<b>2,620</b>	<b>3,219</b>	<b>2,908</b>
Change from prior year		-18.6%	10.7%	13.4%	-18.6%	10.7%	13.4%
<b>Pending Contracts</b>		<b>4,516</b>	<b>4,815</b>	<b>3,784</b>	<b>N/A</b>	<b>N/A</b>	<b>N/A</b>
Change from prior year		-6.2%	27.2%	6.2%			
<b>Sales Volume (1,000s)</b>		<b>648,572</b>	<b>627,340</b>	<b>477,929</b>	<b>648,572</b>	<b>627,340</b>	<b>477,929</b>
Change from prior year		3.4%	31.3%	16.2%	3.4%	31.3%	16.2%
<b>Average</b>	<b>Sale Price</b>	<b>260,366</b>	<b>241,099</b>	<b>211,942</b>	<b>260,366</b>	<b>241,099</b>	<b>211,942</b>
	Change from prior year	8.0%	13.8%	5.6%	8.0%	13.8%	5.6%
	<b>List Price of Actives</b>	<b>331,963</b>	<b>313,014</b>	<b>282,288</b>	<b>N/A</b>	<b>N/A</b>	<b>N/A</b>
	Change from prior year	6.1%	10.9%	6.8%			
	<b>Days on Market</b>	<b>34</b>	<b>44</b>	<b>65</b>	<b>34</b>	<b>44</b>	<b>65</b>
Change from prior year	-22.7%	-32.3%	-1.5%	-22.7%	-32.3%	-1.5%	
<b>Percent of List</b>	<b>99.2%</b>	<b>98.5%</b>	<b>97.0%</b>	<b>99.2%</b>	<b>98.5%</b>	<b>97.0%</b>	
Change from prior year	0.7%	1.5%	0.2%	0.7%	1.5%	0.2%	
<b>Percent of Original</b>	<b>98.0%</b>	<b>97.0%</b>	<b>94.5%</b>	<b>98.0%</b>	<b>97.0%</b>	<b>94.5%</b>	
Change from prior year	1.0%	2.6%	0.5%	1.0%	2.6%	0.5%	
<b>Median</b>	<b>Sale Price</b>	<b>205,000</b>	<b>200,000</b>	<b>176,500</b>	<b>205,000</b>	<b>200,000</b>	<b>176,500</b>
	Change from prior year	2.5%	13.3%	7.0%	2.5%	13.3%	7.0%
	<b>List Price of Actives</b>	<b>219,500</b>	<b>199,975</b>	<b>184,000</b>	<b>N/A</b>	<b>N/A</b>	<b>N/A</b>
	Change from prior year	9.8%	8.7%	4.0%			
	<b>Days on Market</b>	<b>11</b>	<b>13</b>	<b>35</b>	<b>11</b>	<b>13</b>	<b>35</b>
Change from prior year	-15.4%	-62.9%	-18.6%	-15.4%	-62.9%	-18.6%	
<b>Percent of List</b>	<b>100.0%</b>	<b>100.0%</b>	<b>98.6%</b>	<b>100.0%</b>	<b>100.0%</b>	<b>98.6%</b>	
Change from prior year	0.0%	1.4%	0.4%	0.0%	1.4%	0.4%	
<b>Percent of Original</b>	<b>100.0%</b>	<b>99.0%</b>	<b>96.8%</b>	<b>100.0%</b>	<b>99.0%</b>	<b>96.8%</b>	
Change from prior year	1.0%	2.3%	0.5%	1.0%	2.3%	0.5%	

Note: Year-to-date statistics cannot be calculated for Active Listings, Months' Supply and Pending Contracts.



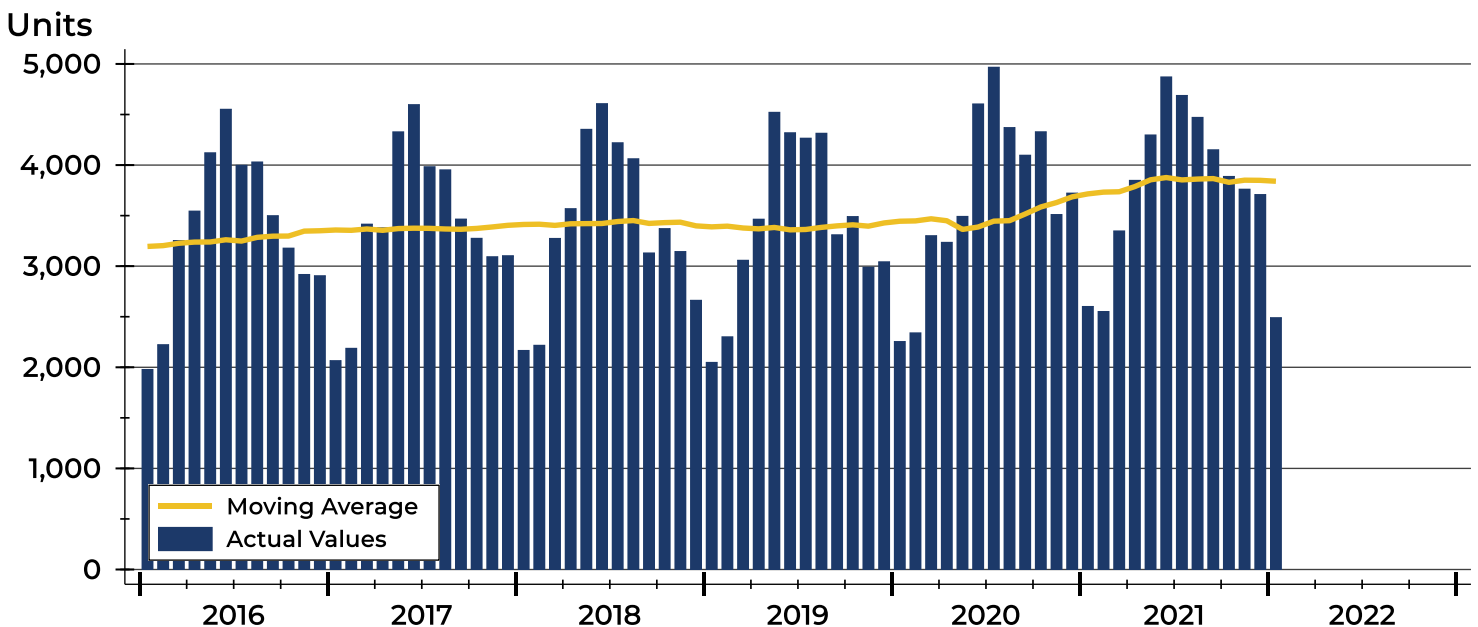
## State of Kansas Closed Listings Analysis

Summary Statistics for Closed Listings		2022	January 2021	Change	2022	Year-to-Date 2021	Change
Closed Listings		<b>2,491</b>	2,602	-4.3%	<b>2,491</b>	2,602	-4.3%
Volume (1,000s)		<b>648,572</b>	627,340	3.4%	<b>648,572</b>	627,340	3.4%
Months' Supply		<b>0.9</b>	1.1	-18.2%	<b>N/A</b>	N/A	N/A
Average	Sale Price	<b>260,366</b>	241,099	8.0%	<b>260,366</b>	241,099	8.0%
	Days on Market	<b>34</b>	44	-22.7%	<b>34</b>	44	-22.7%
	Percent of List	<b>99.2%</b>	98.5%	0.7%	<b>99.2%</b>	98.5%	0.7%
	Percent of Original	<b>98.0%</b>	97.0%	1.0%	<b>98.0%</b>	97.0%	1.0%
Median	Sale Price	<b>205,000</b>	200,000	2.5%	<b>205,000</b>	200,000	2.5%
	Days on Market	<b>11</b>	13	-15.4%	<b>11</b>	13	-15.4%
	Percent of List	<b>100.0%</b>	100.0%	0.0%	<b>100.0%</b>	100.0%	0.0%
	Percent of Original	<b>100.0%</b>	99.0%	1.0%	<b>100.0%</b>	99.0%	1.0%

A total of 2,491 homes sold in the state of Kansas in January, down from 2,602 units in January 2021. Total sales volume rose to \$648.6 million compared to \$627.3 million in the previous year.

The median sales price in January was \$205,000, up 2.5% compared to the prior year. Median days on market was 11 days, up from 9 days in December, but down from 13 in January 2021.

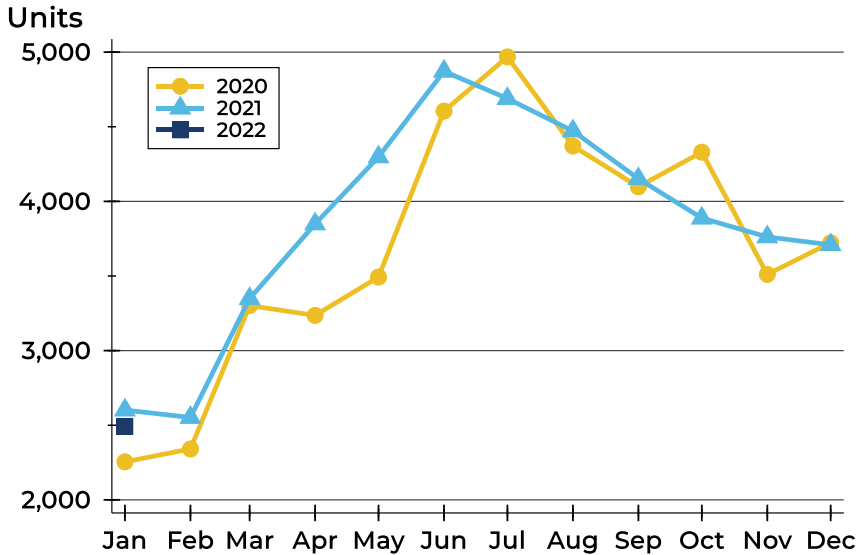
## History of Closed Listings





## State of Kansas Closed Listings Analysis

### Closed Listings by Month



Month	2020	2021	2022
<b>January</b>	2,255	2,602	<b>2,491</b>
<b>February</b>	2,341	2,552	
<b>March</b>	3,302	3,349	
<b>April</b>	3,236	3,849	
<b>May</b>	3,493	4,298	
<b>June</b>	4,605	4,872	
<b>July</b>	4,968	4,689	
<b>August</b>	4,371	4,472	
<b>September</b>	4,098	4,152	
<b>October</b>	4,330	3,888	
<b>November</b>	3,511	3,762	
<b>December</b>	3,723	3,709	

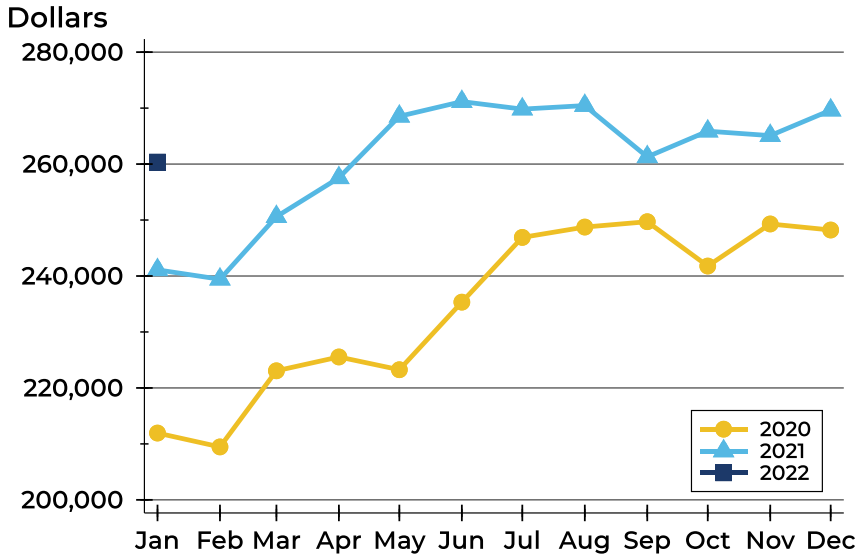
### Closed Listings by Price Range

Price Range	Sales		Months' Supply	Sale Price		Days on Market		Price as % of List		Price as % of Orig.	
	Number	Percent		Average	Median	Avg.	Med.	Avg.	Med.	Avg.	Med.
Below \$25,000	39	1.6%	1.0	15,544	17,000	58	28	91.2%	88.8%	86.4%	85.4%
\$25,000-\$49,999	100	4.0%	1.3	36,136	35,100	64	32	89.2%	89.6%	85.3%	85.7%
\$50,000-\$99,999	328	13.2%	1.4	73,180	73,178	44	27	95.8%	97.2%	93.2%	94.5%
\$100,000-\$124,999	161	6.5%	0.8	112,468	112,000	38	16	99.1%	100.0%	96.9%	98.4%
\$125,000-\$149,999	214	8.6%	0.8	135,470	135,000	34	15	100.1%	100.0%	98.9%	100.0%
\$150,000-\$174,999	188	7.5%	0.5	161,172	161,900	38	14	98.9%	100.0%	97.7%	100.0%
\$175,000-\$199,999	189	7.6%	0.5	185,428	185,000	22	8	99.3%	100.0%	97.8%	100.0%
\$200,000-\$249,999	280	11.2%	0.5	223,572	223,250	27	7	100.0%	100.0%	99.5%	100.0%
\$250,000-\$299,999	250	10.0%	0.5	271,846	270,824	25	5	100.5%	100.0%	99.9%	100.0%
\$300,000-\$399,999	329	13.2%	0.6	344,690	344,000	21	4	101.5%	100.0%	101.1%	100.0%
\$400,000-\$499,999	171	6.9%	1.0	444,331	442,413	27	5	102.5%	100.0%	102.2%	100.0%
\$500,000-\$749,999	168	6.7%	1.6	585,576	569,658	49	9	101.3%	100.0%	101.0%	100.0%
\$750,000-\$999,999	31	1.2%	1.9	854,907	846,000	60	12	100.3%	100.0%	100.3%	100.0%
\$1,000,000 and up	43	1.7%	2.5	1,467,017	1,300,000	39	11	97.6%	96.8%	97.6%	96.8%



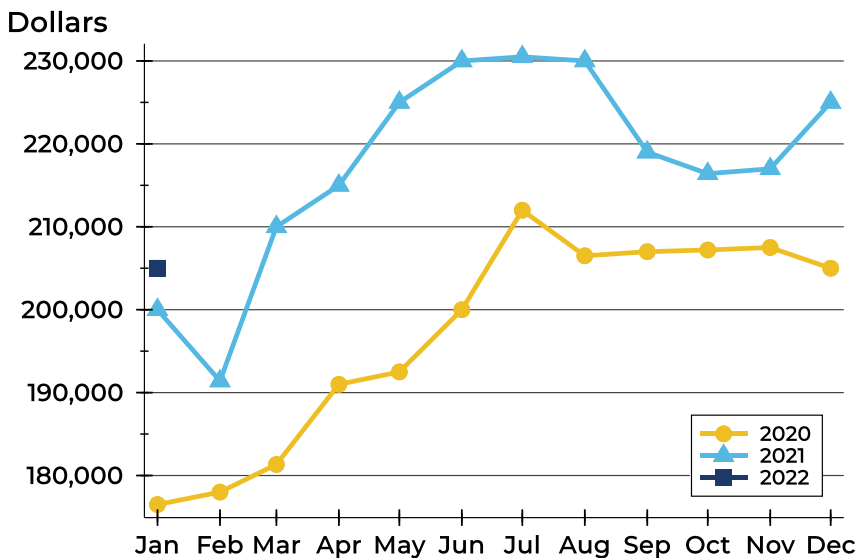
## State of Kansas Closed Listings Analysis

### Average Price



Month	2020	2021	2022
<b>January</b>	211,942	241,099	<b>260,366</b>
<b>February</b>	209,467	239,423	
<b>March</b>	223,060	250,602	
<b>April</b>	225,536	257,541	
<b>May</b>	223,254	268,535	
<b>June</b>	235,332	271,166	
<b>July</b>	246,901	269,818	
<b>August</b>	248,748	270,456	
<b>September</b>	249,705	261,288	
<b>October</b>	241,781	265,878	
<b>November</b>	249,298	265,087	
<b>December</b>	248,221	269,630	

### Median Price

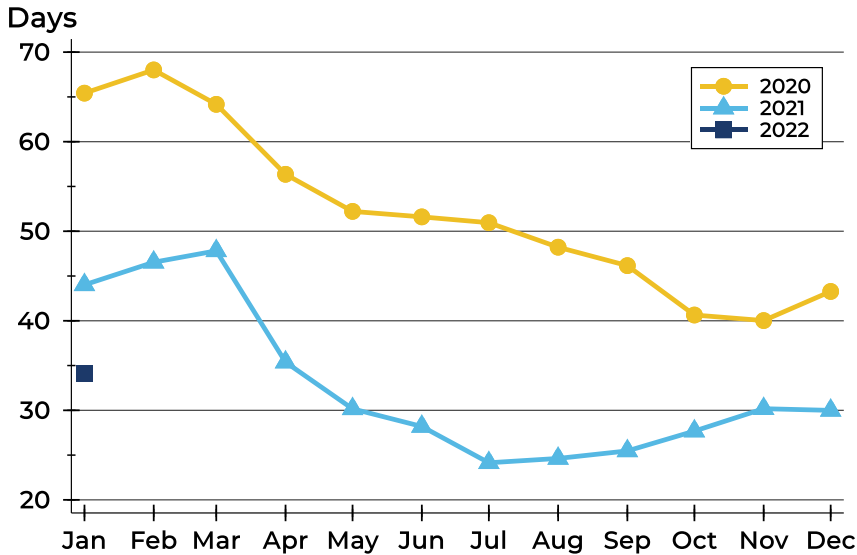


Month	2020	2021	2022
<b>January</b>	176,500	200,000	<b>205,000</b>
<b>February</b>	178,000	191,400	
<b>March</b>	181,335	210,000	
<b>April</b>	191,000	215,000	
<b>May</b>	192,500	225,000	
<b>June</b>	200,000	230,000	
<b>July</b>	212,000	230,500	
<b>August</b>	206,500	230,000	
<b>September</b>	207,000	219,000	
<b>October</b>	207,200	216,404	
<b>November</b>	207,500	217,000	
<b>December</b>	205,000	225,000	



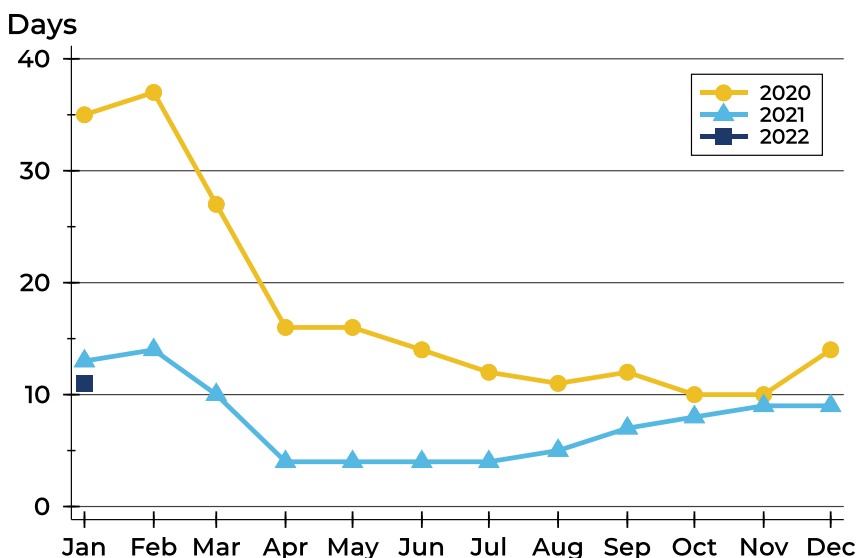
## State of Kansas Closed Listings Analysis

### Average DOM



Month	2020	2021	2022
<b>January</b>	65	44	<b>34</b>
<b>February</b>	68	47	
<b>March</b>	64	48	
<b>April</b>	56	35	
<b>May</b>	52	30	
<b>June</b>	52	28	
<b>July</b>	51	24	
<b>August</b>	48	25	
<b>September</b>	46	25	
<b>October</b>	41	28	
<b>November</b>	40	30	
<b>December</b>	43	30	

### Median DOM



Month	2020	2021	2022
<b>January</b>	35	13	<b>11</b>
<b>February</b>	37	14	
<b>March</b>	27	10	
<b>April</b>	16	4	
<b>May</b>	16	4	
<b>June</b>	14	4	
<b>July</b>	12	4	
<b>August</b>	11	5	
<b>September</b>	12	7	
<b>October</b>	10	8	
<b>November</b>	10	9	
<b>December</b>	14	9	



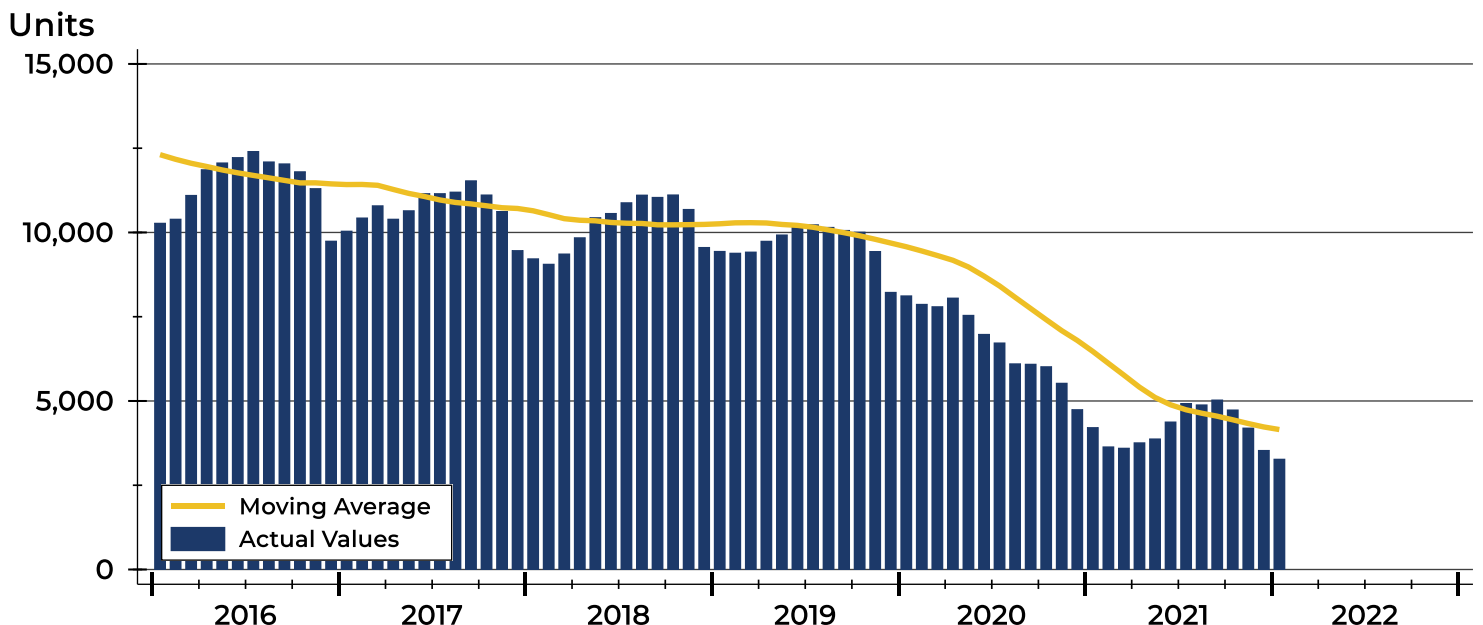
## State of Kansas Active Listings Analysis

Summary Statistics for Active Listings		2022	End of January 2021	Change
Active Listings		<b>3,274</b>	4,211	-22.3%
Volume (1,000s)		<b>1,086,846</b>	1,318,103	-17.5%
Months' Supply		<b>0.9</b>	1.1	-18.2%
Average	List Price	<b>331,963</b>	313,014	6.1%
	Days on Market	<b>74</b>	95	-22.1%
	Percent of Original	<b>98.7%</b>	98.3%	0.4%
Median	List Price	<b>219,500</b>	199,975	9.8%
	Days on Market	<b>33</b>	48	-31.3%
	Percent of Original	<b>100.0%</b>	100.0%	0.0%

A total of 3,274 homes were available for sale in the state of Kansas at the end of January. This represents a 0.9 months' supply of active listings.

The median list price of homes on the market at the end of January was \$219,500, up 9.8% from 2021. The typical time on market for active listings was 33 days, down from 48 days a year earlier.

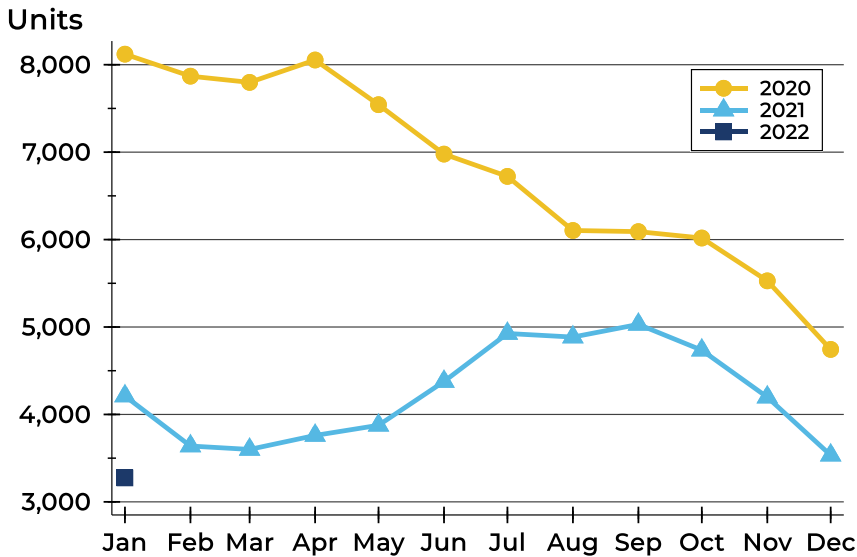
## History of Active Listings





## State of Kansas Active Listings Analysis

### Active Listings by Month



Month	2020	2021	2022
<b>January</b>	8,121	4,211	<b>3,274</b>
<b>February</b>	7,869	3,639	
<b>March</b>	7,798	3,600	
<b>April</b>	8,054	3,760	
<b>May</b>	7,543	3,876	
<b>June</b>	6,978	4,377	
<b>July</b>	6,723	4,926	
<b>August</b>	6,104	4,885	
<b>September</b>	6,091	5,030	
<b>October</b>	6,018	4,735	
<b>November</b>	5,528	4,198	
<b>December</b>	4,744	3,534	

### Active Listings by Price Range

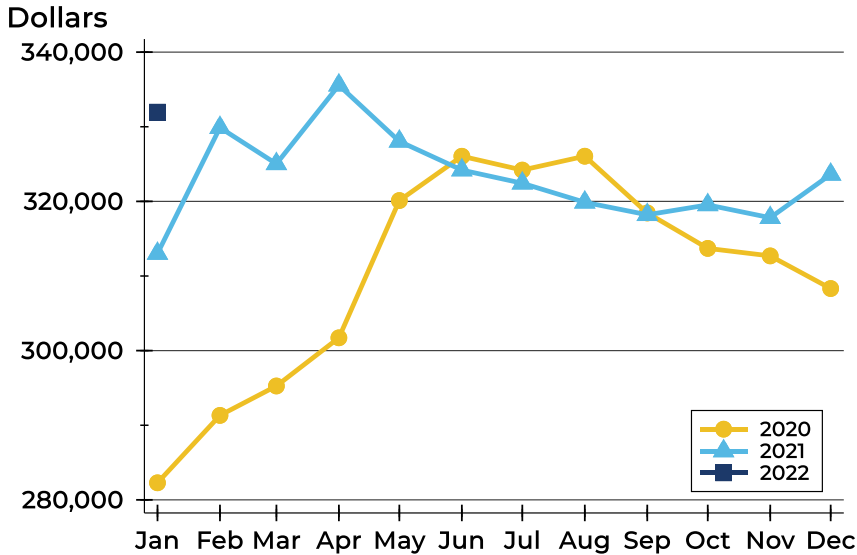
Price Range	Active Listings		Months' Supply	List Price		Days on Market		Price as % of Orig.	
	Number	Percent		Average	Median	Avg.	Med.	Avg.	Med.
Below \$25,000	46	1.4%	1.0	13,632	18,000	247	55	89.2%	100.0%
\$25,000-\$49,999	171	5.3%	1.3	39,790	39,900	92	69	93.5%	100.0%
\$50,000-\$99,999	599	18.5%	1.4	74,804	75,000	96	60	96.2%	100.0%
\$100,000-\$124,999	192	5.9%	0.8	113,178	114,900	80	47	97.0%	100.0%
\$125,000-\$149,999	228	7.1%	0.8	136,072	135,000	68	44	98.0%	100.0%
\$150,000-\$174,999	145	4.5%	0.5	161,471	160,000	65	56	98.3%	100.0%
\$175,000-\$199,999	154	4.8%	0.5	187,145	187,000	69	34	98.4%	100.0%
\$200,000-\$249,999	236	7.3%	0.5	226,751	225,000	73	31	98.3%	100.0%
\$250,000-\$299,999	200	6.2%	0.5	271,362	270,000	74	44	100.1%	100.0%
\$300,000-\$399,999	347	10.7%	0.6	355,159	355,000	56	20	100.7%	100.0%
\$400,000-\$499,999	291	9.0%	1.0	448,353	447,950	46	12	101.0%	100.0%
\$500,000-\$749,999	407	12.6%	1.6	611,027	600,000	40	0	102.5%	100.0%
\$750,000-\$999,999	107	3.3%	1.9	860,686	850,000	65	2	101.8%	100.0%
\$1,000,000 and up	109	3.4%	2.5	1,957,787	1,599,900	174	88	100.0%	100.0%





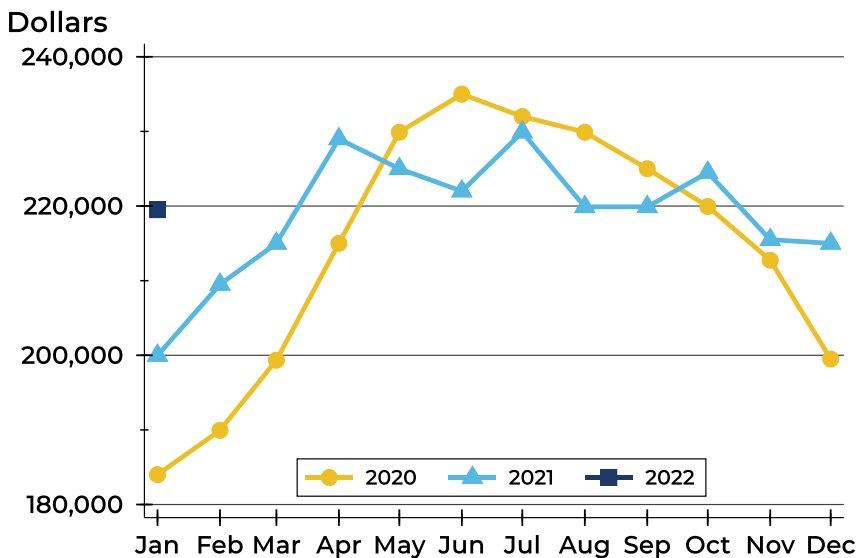
## State of Kansas Active Listings Analysis

### Average Price



Month	2020	2021	2022
<b>January</b>	282,288	313,014	<b>331,963</b>
<b>February</b>	291,321	329,887	
<b>March</b>	295,262	325,030	
<b>April</b>	301,718	335,570	
<b>May</b>	320,114	328,048	
<b>June</b>	326,050	324,196	
<b>July</b>	324,196	322,433	
<b>August</b>	326,057	319,881	
<b>September</b>	318,452	318,207	
<b>October</b>	313,704	319,530	
<b>November</b>	312,697	317,813	
<b>December</b>	308,322	323,615	

### Median Price

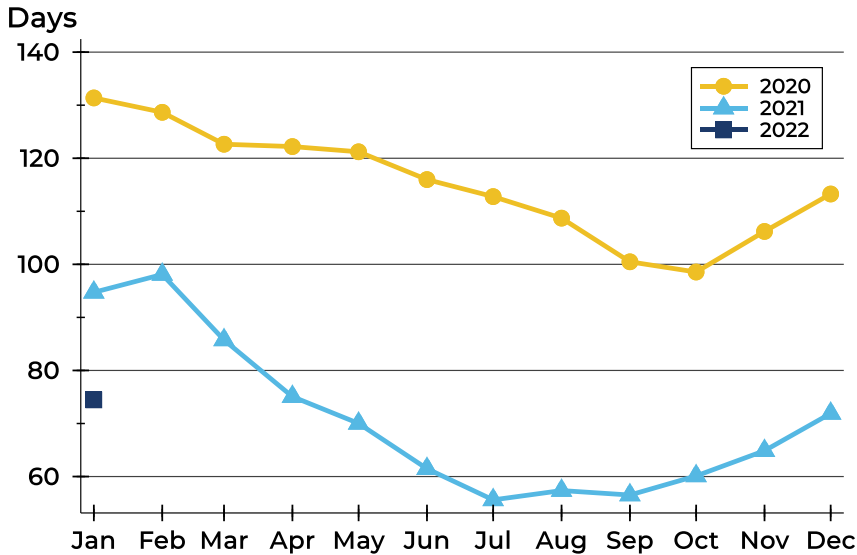


Month	2020	2021	2022
<b>January</b>	184,000	199,975	<b>219,500</b>
<b>February</b>	189,950	209,500	
<b>March</b>	199,350	215,000	
<b>April</b>	215,000	229,000	
<b>May</b>	229,900	225,000	
<b>June</b>	235,000	222,000	
<b>July</b>	232,000	229,900	
<b>August</b>	229,900	219,900	
<b>September</b>	225,000	219,900	
<b>October</b>	219,950	224,500	
<b>November</b>	212,750	215,500	
<b>December</b>	199,500	215,000	



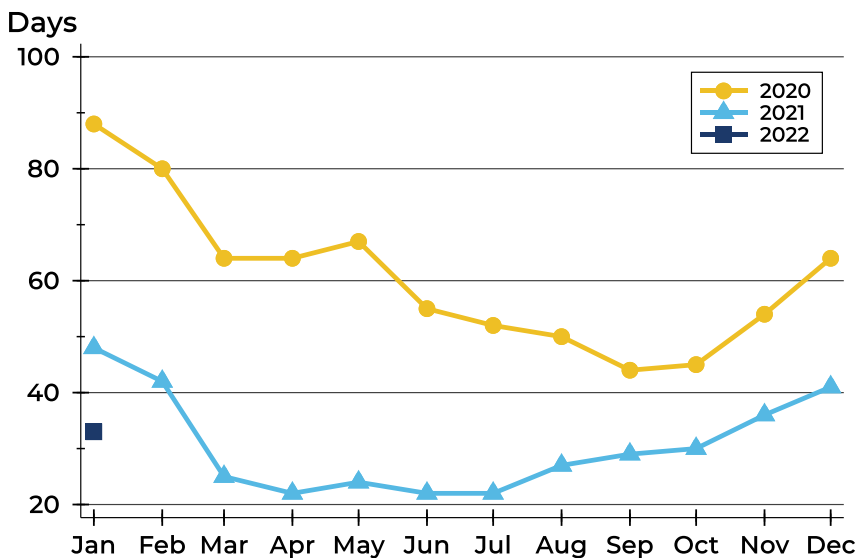
## State of Kansas Active Listings Analysis

### Average DOM



Month	2020	2021	2022
<b>January</b>	131	95	<b>74</b>
<b>February</b>	129	98	
<b>March</b>	123	86	
<b>April</b>	122	75	
<b>May</b>	121	70	
<b>June</b>	116	61	
<b>July</b>	113	56	
<b>August</b>	109	57	
<b>September</b>	100	57	
<b>October</b>	99	60	
<b>November</b>	106	65	
<b>December</b>	113	72	

### Median DOM

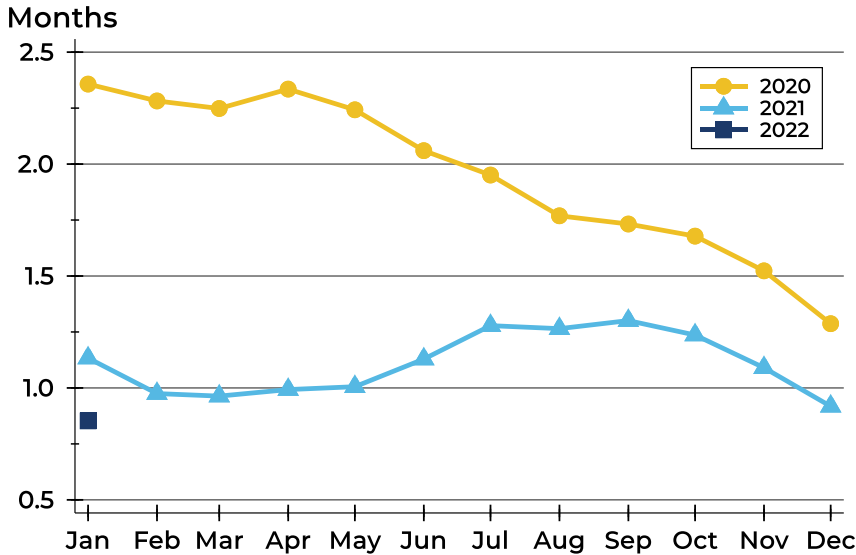


Month	2020	2021	2022
<b>January</b>	88	48	<b>33</b>
<b>February</b>	80	42	
<b>March</b>	64	25	
<b>April</b>	64	22	
<b>May</b>	67	24	
<b>June</b>	55	22	
<b>July</b>	52	22	
<b>August</b>	50	27	
<b>September</b>	44	29	
<b>October</b>	45	30	
<b>November</b>	54	36	
<b>December</b>	64	41	



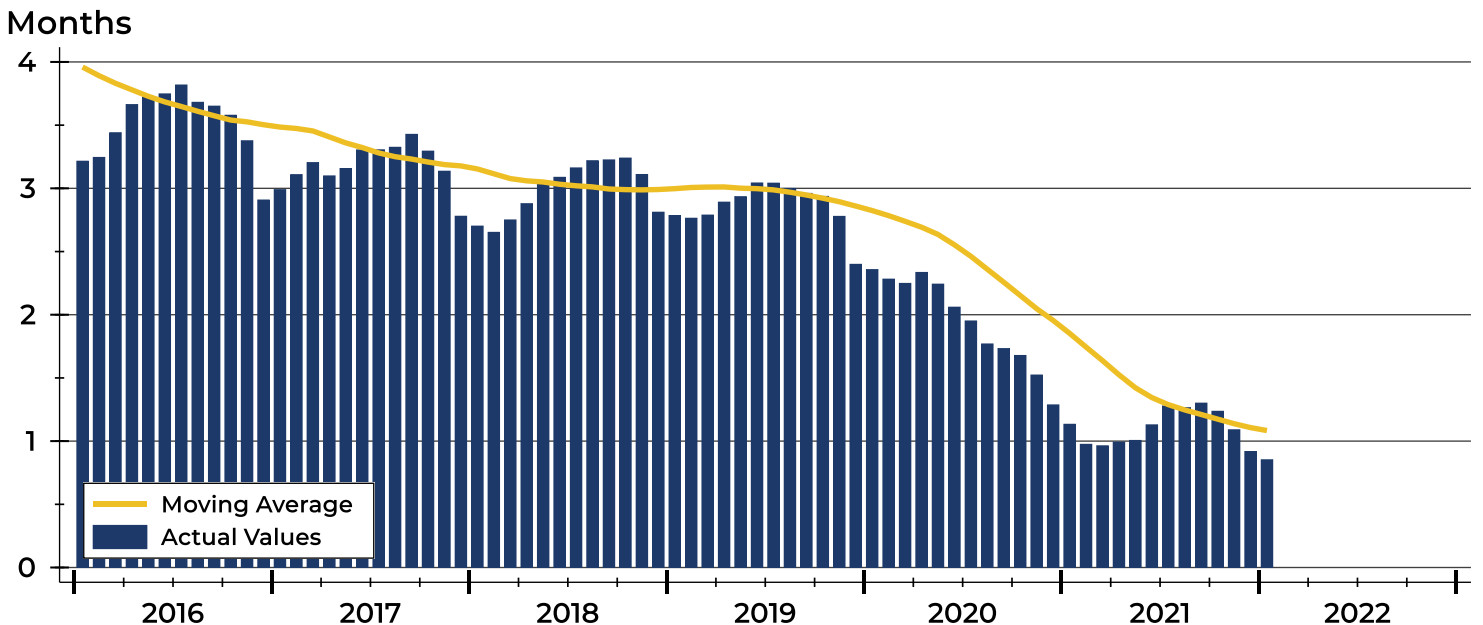
## State of Kansas Months' Supply Analysis

### Months' Supply by Month



Month	2020	2021	2022
<b>January</b>	2.4	1.1	<b>0.9</b>
<b>February</b>	2.3	1.0	
<b>March</b>	2.2	1.0	
<b>April</b>	2.3	1.0	
<b>May</b>	2.2	1.0	
<b>June</b>	2.1	1.1	
<b>July</b>	2.0	1.3	
<b>August</b>	1.8	1.3	
<b>September</b>	1.7	1.3	
<b>October</b>	1.7	1.2	
<b>November</b>	1.5	1.1	
<b>December</b>	1.3	0.9	

### History of Month's Supply





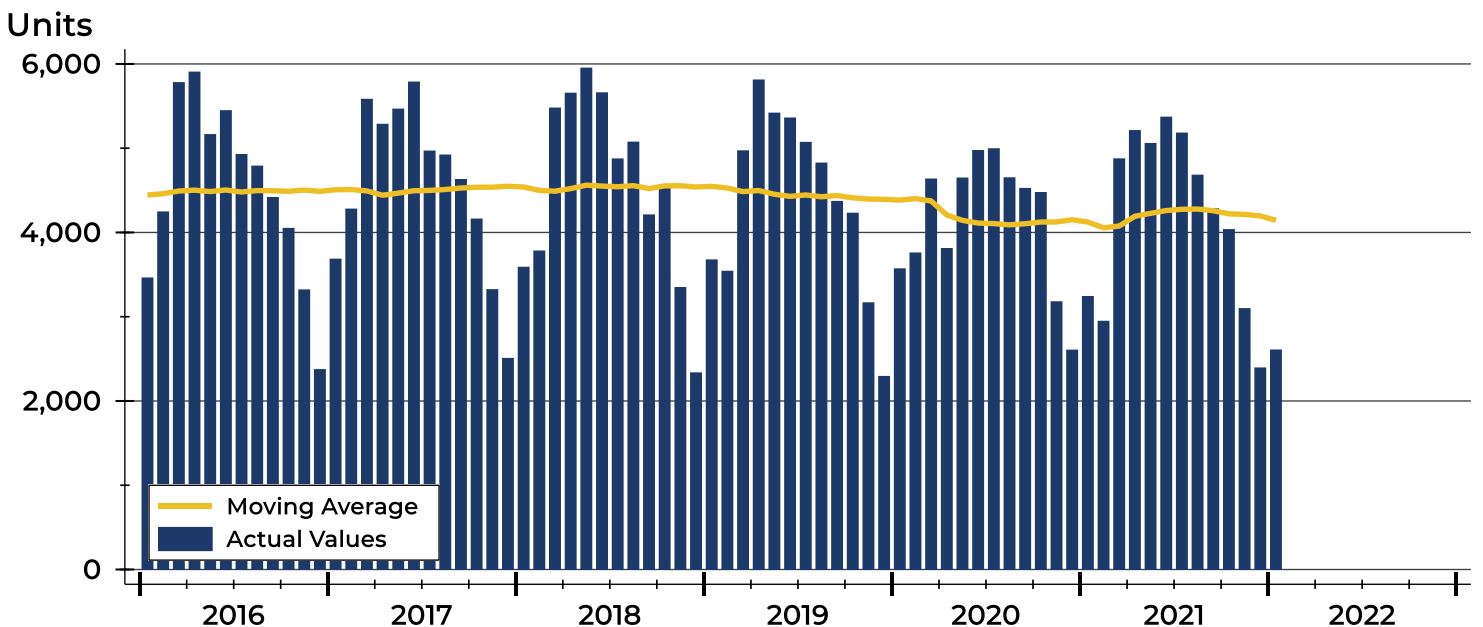
## State of Kansas New Listings Analysis

Summary Statistics for New Listings		2022	January 2021	Change
Current Month	New Listings	<b>2,606</b>	3,241	-19.6%
	Volume (1,000s)	<b>727,683</b>	843,484	-13.7%
	Average List Price	<b>279,234</b>	260,254	7.3%
	Median List Price	<b>215,000</b>	209,900	2.4%
Year-to-Date	New Listings	<b>2,606</b>	3,241	-19.6%
	Volume (1,000s)	<b>727,683</b>	843,484	-13.7%
	Average List Price	<b>279,234</b>	260,254	7.3%
	Median List Price	<b>215,000</b>	209,900	2.4%

A total of 2,606 new listings were added in the state of Kansas during January, down 19.6% from the same month in 2021.

The median list price of these homes was \$215,000 up from \$209,900 in 2021.

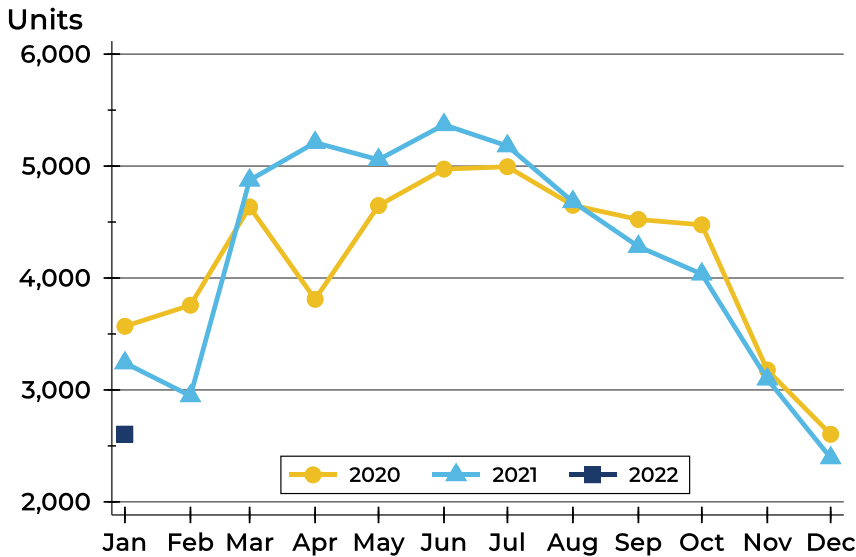
## History of New Listings





## State of Kansas New Listings Analysis

### New Listings by Month



Month	2020	2021	2022
<b>January</b>	3,569	3,241	<b>2,606</b>
<b>February</b>	3,757	2,947	
<b>March</b>	4,635	4,874	
<b>April</b>	3,810	5,210	
<b>May</b>	4,647	5,057	
<b>June</b>	4,973	5,369	
<b>July</b>	4,994	5,180	
<b>August</b>	4,650	4,681	
<b>September</b>	4,523	4,281	
<b>October</b>	4,475	4,035	
<b>November</b>	3,178	3,097	
<b>December</b>	2,604	2,393	

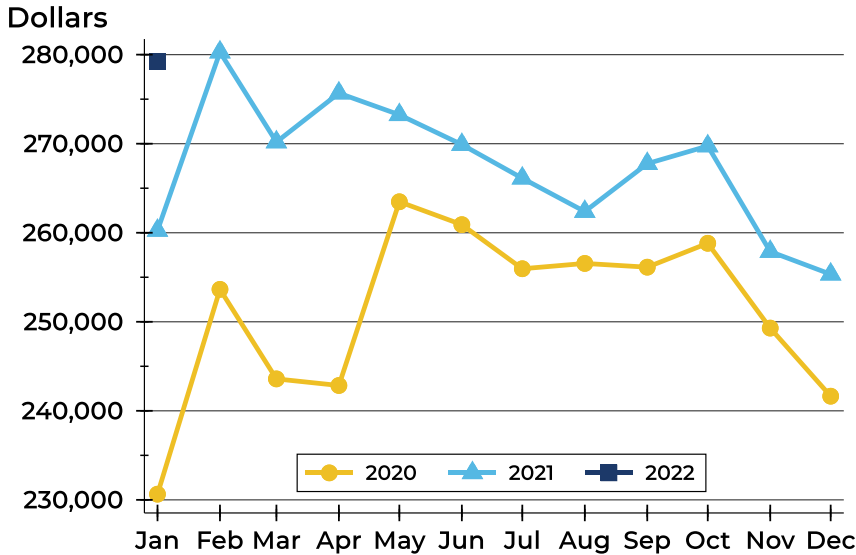
### New Listings by Price Range

Price Range	New Listings		List Price		Days on Market		Price as % of Orig.	
	Number	Percent	Average	Median	Avg.	Med.	Avg.	Med.
Below \$25,000	36	1.4%	11,059	11,000	11	10	98.8%	100.0%
\$25,000-\$49,999	100	3.9%	39,312	39,900	12	9	99.7%	100.0%
\$50,000-\$99,999	322	12.5%	77,701	79,900	13	11	98.9%	100.0%
\$100,000-\$124,999	171	6.7%	113,336	114,900	11	7	99.7%	100.0%
\$125,000-\$149,999	211	8.2%	135,887	135,000	10	7	100.0%	100.0%
\$150,000-\$174,999	161	6.3%	161,371	160,000	8	4	100.1%	100.0%
\$175,000-\$199,999	206	8.0%	185,942	185,000	8	4	99.9%	100.0%
\$200,000-\$249,999	300	11.7%	227,657	229,000	9	4	100.0%	100.0%
\$250,000-\$299,999	260	10.1%	273,591	275,000	6	3	100.3%	100.0%
\$300,000-\$399,999	334	13.0%	347,433	345,000	7	3	100.2%	100.0%
\$400,000-\$499,999	175	6.8%	444,402	435,800	7	2	100.3%	100.0%
\$500,000-\$749,999	199	7.8%	603,379	595,000	6	1	100.2%	100.0%
\$750,000-\$999,999	55	2.1%	849,128	845,000	4	1	100.1%	100.0%
\$1,000,000 and up	37	1.4%	2,029,404	1,435,140	10	8	100.0%	100.0%



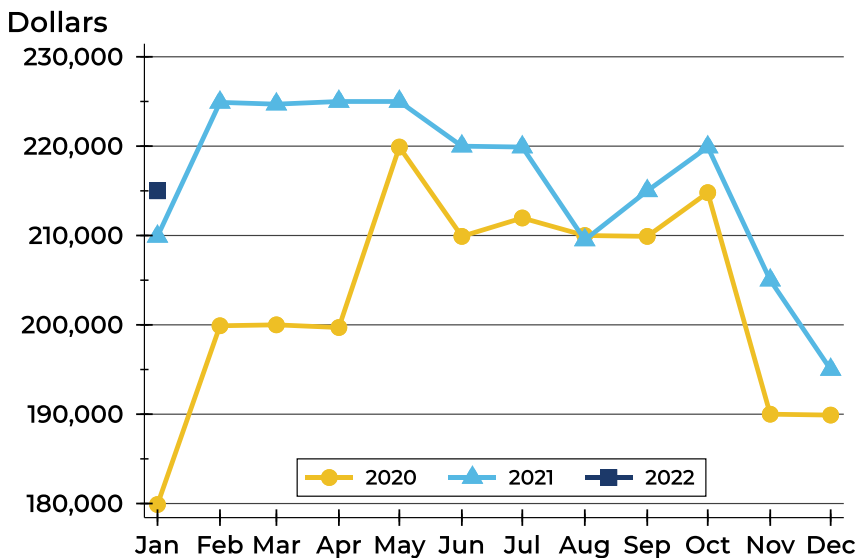
## State of Kansas New Listings Analysis

### Average Price



Month	2020	2021	2022
<b>January</b>	230,642	260,254	<b>279,234</b>
<b>February</b>	253,642	280,281	
<b>March</b>	243,587	270,185	
<b>April</b>	242,846	275,677	
<b>May</b>	263,480	273,246	
<b>June</b>	260,909	269,899	
<b>July</b>	255,958	266,122	
<b>August</b>	256,556	262,376	
<b>September</b>	258,133	267,761	
<b>October</b>	258,817	269,738	
<b>November</b>	249,293	257,885	
<b>December</b>	241,644	255,339	

### Median Price



Month	2020	2021	2022
<b>January</b>	179,888	209,900	<b>215,000</b>
<b>February</b>	199,900	224,900	
<b>March</b>	200,000	224,700	
<b>April</b>	199,700	225,000	
<b>May</b>	219,900	225,000	
<b>June</b>	209,900	220,000	
<b>July</b>	211,963	219,900	
<b>August</b>	210,000	209,500	
<b>September</b>	209,900	215,000	
<b>October</b>	214,800	219,900	
<b>November</b>	190,000	205,000	
<b>December</b>	189,900	195,000	



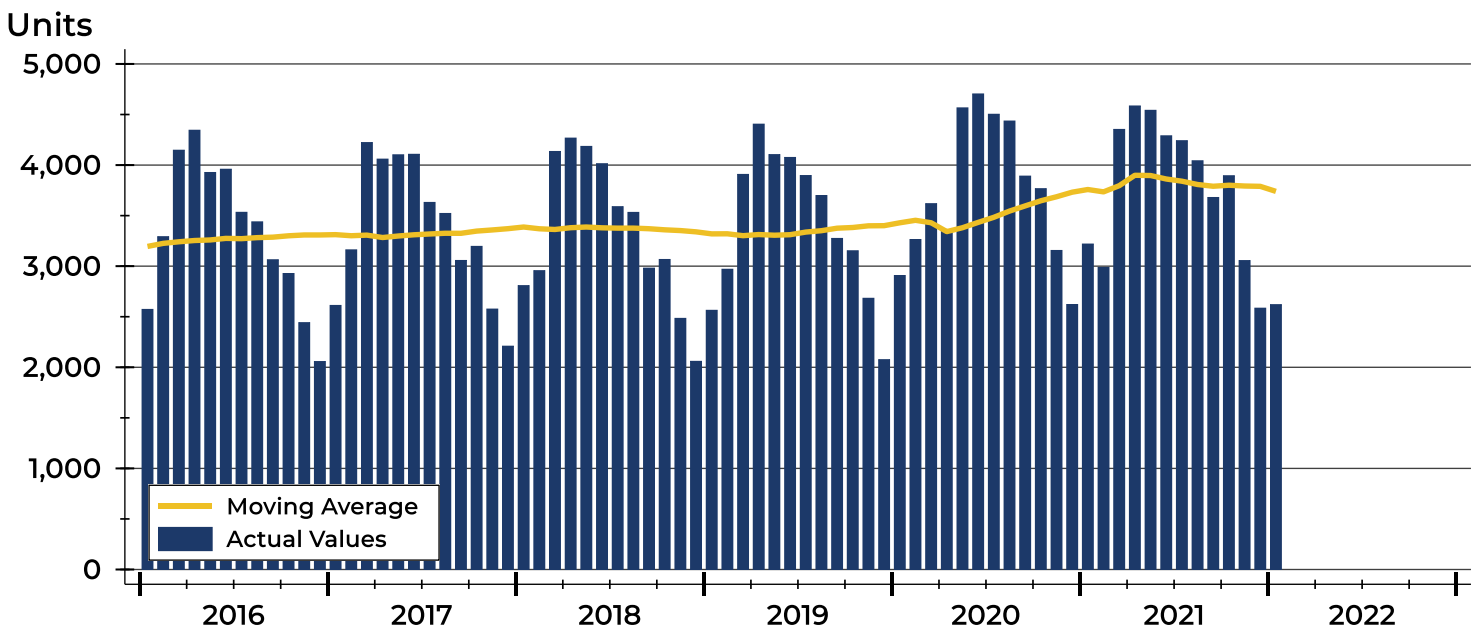
## State of Kansas Contracts Written Analysis

Summary Statistics for Contracts Written		January 2021			Year-to-Date 2021		
		2022	2021	Change	2022	2021	Change
Contracts Written		<b>2,620</b>	3,219	-18.6%	<b>2,620</b>	3,219	-18.6%
Volume (1,000s)		<b>685,416</b>	818,913	-16.3%	<b>685,416</b>	818,913	-16.3%
Average	Sale Price	<b>261,609</b>	254,400	2.8%	<b>261,609</b>	254,400	2.8%
	Days on Market	<b>34</b>	48	-29.2%	<b>34</b>	48	-29.2%
	Percent of Original	<b>98.6%</b>	98.3%	0.3%	<b>98.6%</b>	98.3%	0.3%
Median	Sale Price	<b>215,000</b>	203,000	5.9%	<b>215,000</b>	203,000	5.9%
	Days on Market	<b>7</b>	11	-36.4%	<b>7</b>	11	-36.4%
	Percent of Original	<b>100.0%</b>	100.0%	0.0%	<b>100.0%</b>	100.0%	0.0%

A total of 2,620 contracts for sale were written in the state of Kansas during the month of January, down from 3,219 in 2021. The median list price of these homes was \$215,000, up from \$203,000 the prior year.

Half of the homes that went under contract in January were on the market less than 7 days, compared to 11 days in January 2021.

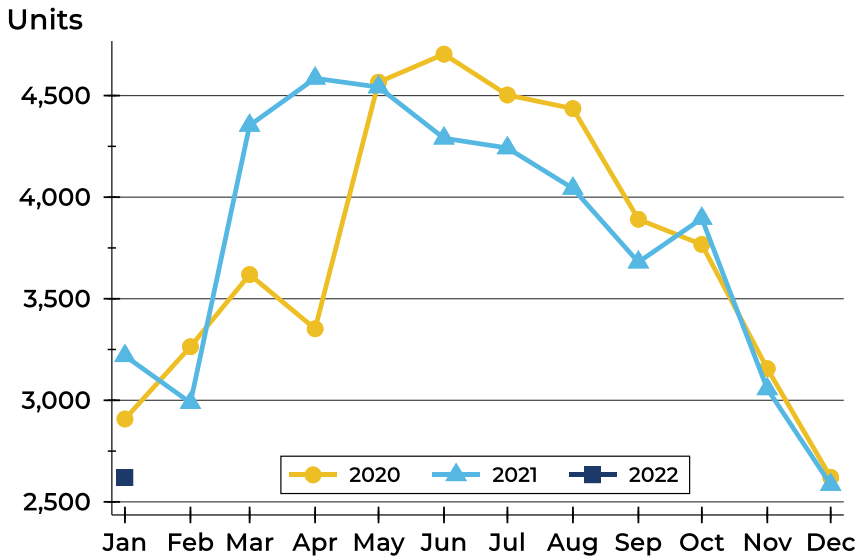
## History of Contracts Written





## State of Kansas Contracts Written Analysis

### Contracts Written by Month



Month	2020	2021	2022
<b>January</b>	2,908	3,219	<b>2,620</b>
<b>February</b>	3,264	2,988	
<b>March</b>	3,619	4,353	
<b>April</b>	3,352	4,585	
<b>May</b>	4,566	4,542	
<b>June</b>	4,704	4,290	
<b>July</b>	4,503	4,242	
<b>August</b>	4,436	4,043	
<b>September</b>	3,891	3,680	
<b>October</b>	3,767	3,895	
<b>November</b>	3,156	3,056	
<b>December</b>	2,621	2,585	

### Contracts Written by Price Range

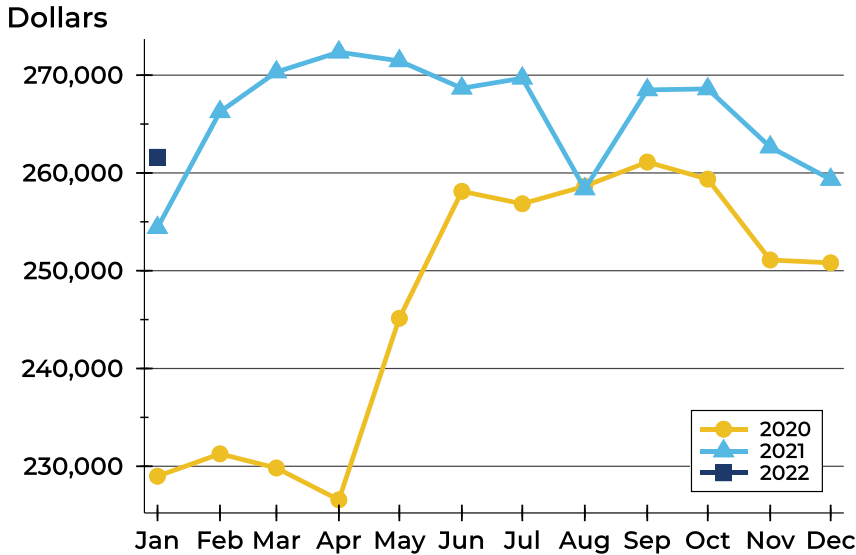
Price Range	Contracts Written		List Price		Days on Market		Price as % of Orig.	
	Number	Percent	Average	Median	Avg.	Med.	Avg.	Med.
Below \$25,000	32	1.2%	16,869	18,350	30	14	89.8%	100.0%
\$25,000-\$49,999	100	3.8%	38,731	39,900	54	19	94.0%	100.0%
\$50,000-\$99,999	329	12.6%	77,939	80,000	43	28	96.0%	100.0%
\$100,000-\$124,999	179	6.9%	113,113	114,500	34	15	97.9%	100.0%
\$125,000-\$149,999	234	9.0%	137,043	137,500	30	9	98.4%	100.0%
\$150,000-\$174,999	172	6.6%	161,621	161,750	30	7	99.2%	100.0%
\$175,000-\$199,999	201	7.7%	186,514	185,000	25	5	98.8%	100.0%
\$200,000-\$249,999	322	12.3%	226,988	225,000	26	5	99.0%	100.0%
\$250,000-\$299,999	255	9.8%	274,087	275,000	17	3	99.9%	100.0%
\$300,000-\$399,999	342	13.1%	348,280	349,900	32	4	99.6%	100.0%
\$400,000-\$499,999	196	7.5%	446,816	447,725	38	4	99.7%	100.0%
\$500,000-\$749,999	177	6.8%	600,063	595,050	55	4	101.3%	100.0%
\$750,000-\$999,999	44	1.7%	841,132	844,825	31	1	98.8%	100.0%
\$1,000,000 and up	28	1.1%	1,518,282	1,272,500	53	5	98.4%	100.0%





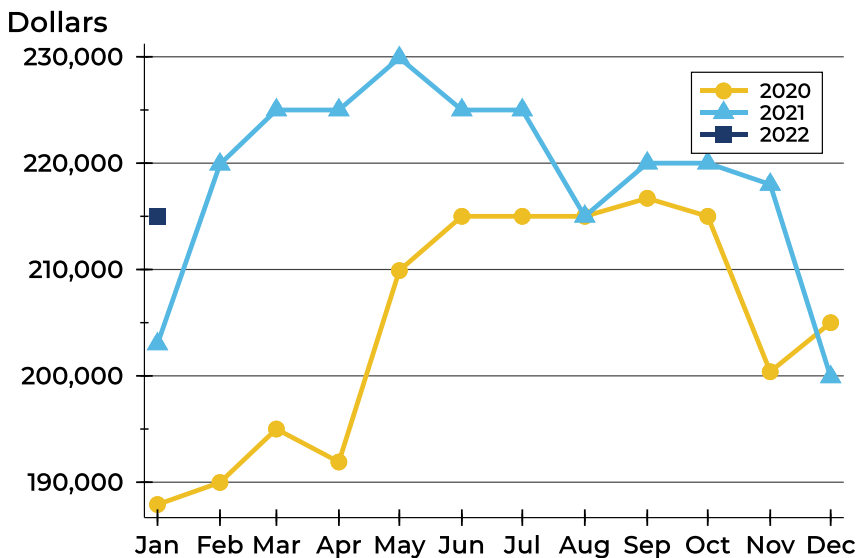
## State of Kansas Contracts Written Analysis

### Average Price



Month	2020	2021	2022
<b>January</b>	228,985	254,400	<b>261,609</b>
<b>February</b>	231,271	266,253	
<b>March</b>	229,827	270,327	
<b>April</b>	226,565	272,355	
<b>May</b>	245,136	271,463	
<b>June</b>	258,120	268,665	
<b>July</b>	256,849	269,690	
<b>August</b>	258,644	258,364	
<b>September</b>	261,116	268,494	
<b>October</b>	259,372	268,597	
<b>November</b>	251,097	262,650	
<b>December</b>	250,807	259,333	

### Median Price

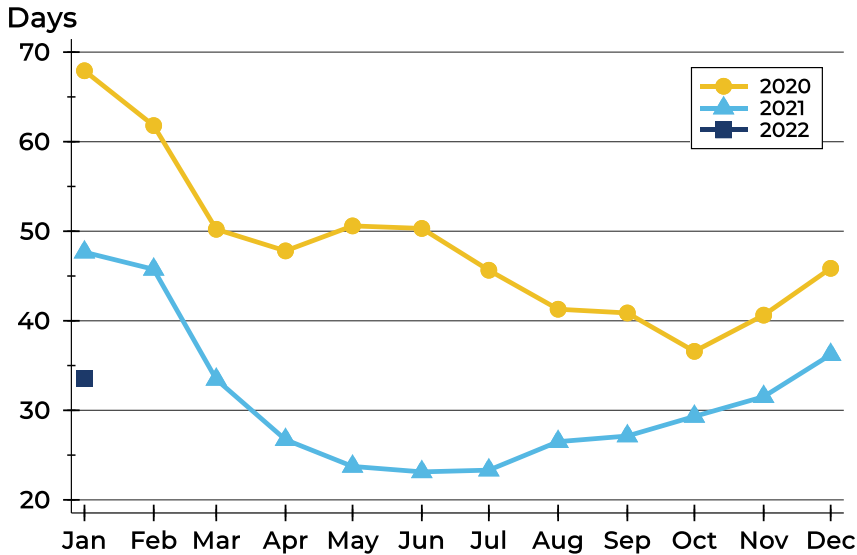


Month	2020	2021	2022
<b>January</b>	187,900	203,000	<b>215,000</b>
<b>February</b>	189,975	219,900	
<b>March</b>	195,000	225,000	
<b>April</b>	191,900	225,000	
<b>May</b>	209,900	229,900	
<b>June</b>	215,000	225,000	
<b>July</b>	215,000	225,000	
<b>August</b>	215,000	215,000	
<b>September</b>	216,701	220,000	
<b>October</b>	215,000	220,000	
<b>November</b>	200,387	218,000	
<b>December</b>	205,000	199,900	



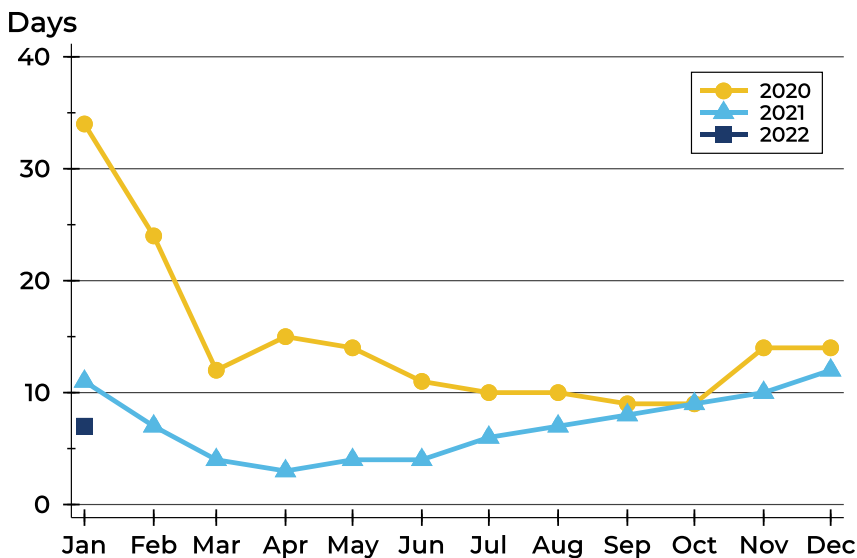
## State of Kansas Contracts Written Analysis

### Average DOM



Month	2020	2021	2022
<b>January</b>	68	48	<b>34</b>
<b>February</b>	62	46	
<b>March</b>	50	33	
<b>April</b>	48	27	
<b>May</b>	51	24	
<b>June</b>	50	23	
<b>July</b>	46	23	
<b>August</b>	41	27	
<b>September</b>	41	27	
<b>October</b>	37	29	
<b>November</b>	41	32	
<b>December</b>	46	36	

### Median DOM



Month	2020	2021	2022
<b>January</b>	34	11	<b>7</b>
<b>February</b>	24	7	
<b>March</b>	12	4	
<b>April</b>	15	3	
<b>May</b>	14	4	
<b>June</b>	11	4	
<b>July</b>	10	6	
<b>August</b>	10	7	
<b>September</b>	9	8	
<b>October</b>	9	9	
<b>November</b>	14	10	
<b>December</b>	14	12	



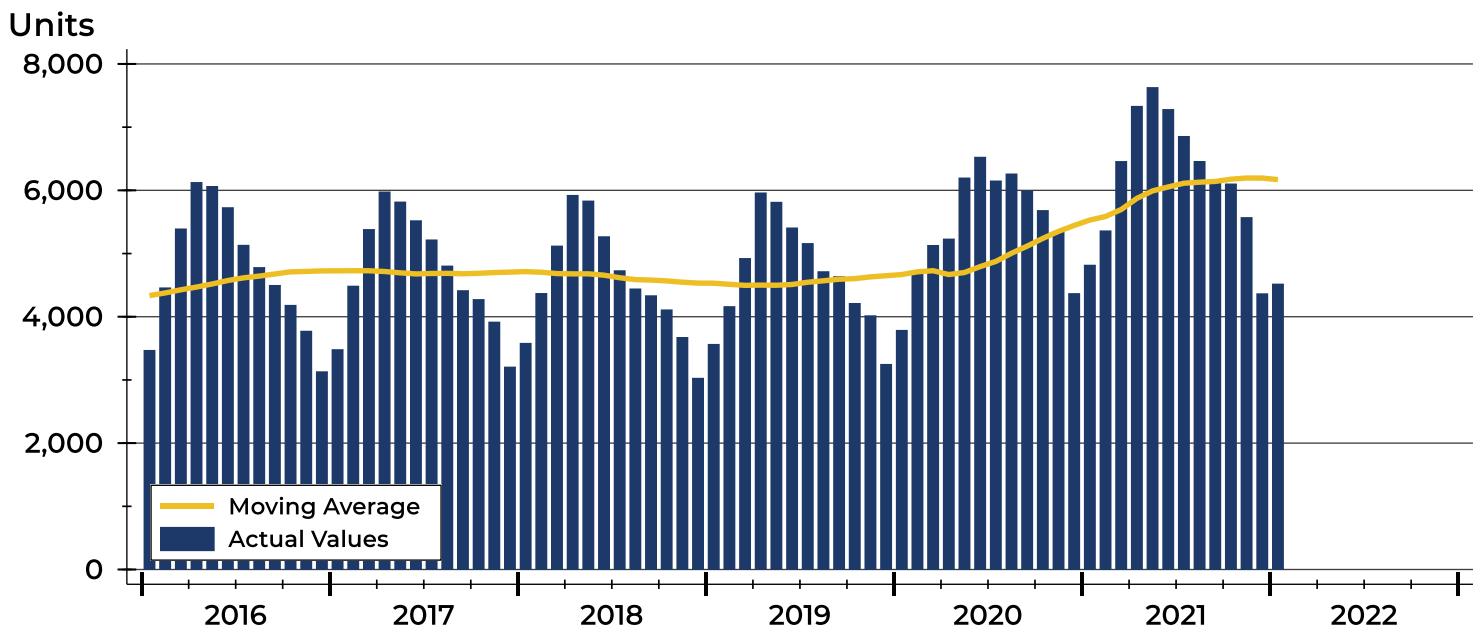
## State of Kansas Pending Contracts Analysis

Summary Statistics for Pending Contracts		End of January		
		2022	2021	Change
Pending Contracts		<b>4,516</b>	4,815	-6.2%
Volume (1,000s)		<b>1,582,969</b>	1,474,505	7.4%
Average	List Price	<b>350,525</b>	306,232	14.5%
	Days on Market	<b>36</b>	38	-5.3%
	Percent of Original	<b>99.4%</b>	98.8%	0.6%
Median	List Price	<b>274,311</b>	240,000	14.3%
	Days on Market	<b>4</b>	4	0.0%
	Percent of Original	<b>100.0%</b>	100.0%	0.0%

A total of 4,516 listings in the state of Kansas had contracts pending at the end of January, down from 4,815 contracts pending at the end of January 2021.

Pending contracts reflect listings with a contract in place at the end of the month. In contrast, contracts written measures the number of listings put under contract during the month.

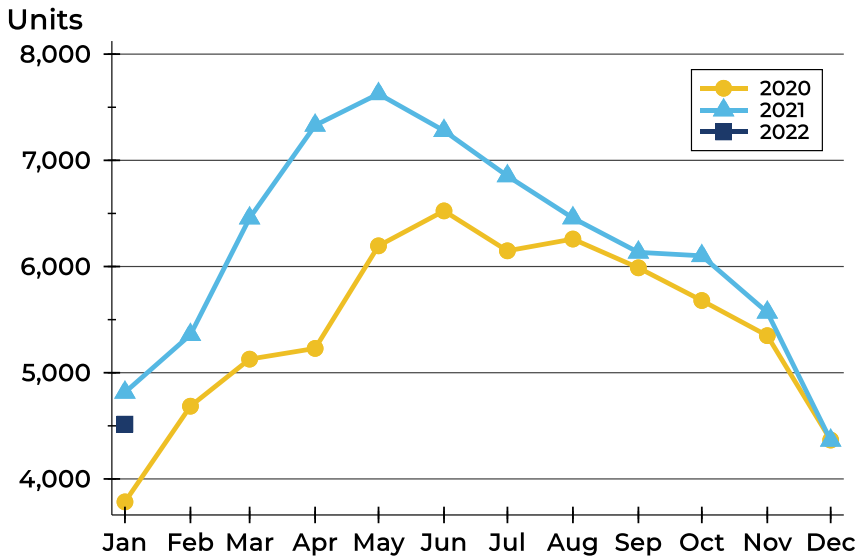
## History of Pending Contracts





## State of Kansas Pending Contracts Analysis

### Pending Contracts by Month



Month	2020	2021	2022
<b>January</b>	3,784	4,815	<b>4,516</b>
<b>February</b>	4,685	5,358	
<b>March</b>	5,128	6,456	
<b>April</b>	5,229	7,329	
<b>May</b>	6,195	7,626	
<b>June</b>	6,524	7,279	
<b>July</b>	6,148	6,853	
<b>August</b>	6,259	6,457	
<b>September</b>	5,988	6,134	
<b>October</b>	5,680	6,101	
<b>November</b>	5,349	5,569	
<b>December</b>	4,366	4,363	

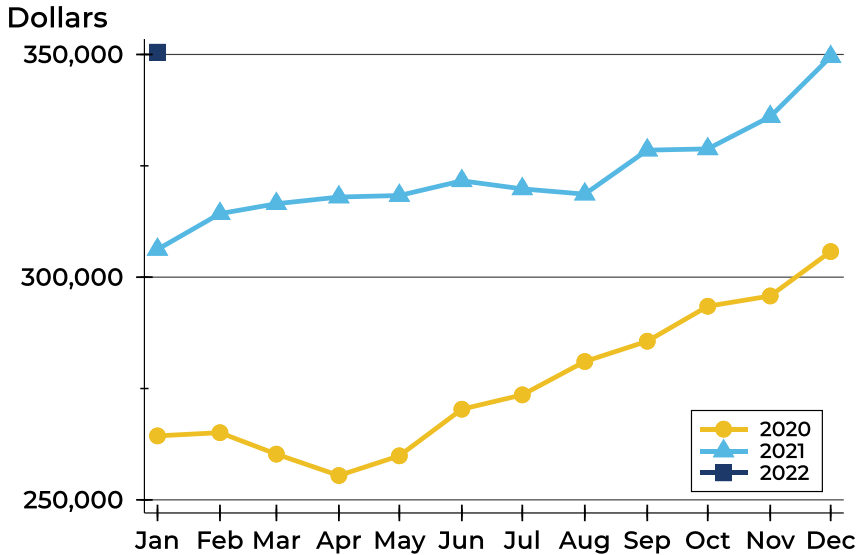
### Pending Contracts by Price Range

Price Range	Pending Contracts		List Price		Days on Market		Price as % of Orig.	
	Number	Percent	Average	Median	Avg.	Med.	Avg.	Med.
Below \$25,000	21	0.5%	16,734	18,000	212	15	97.9%	100.0%
\$25,000-\$49,999	88	2.0%	38,108	39,900	86	30	94.9%	100.0%
\$50,000-\$99,999	414	9.2%	78,289	79,900	65	26	97.4%	100.0%
\$100,000-\$124,999	242	5.4%	113,279	114,900	48	17	97.7%	100.0%
\$125,000-\$149,999	302	6.7%	136,890	136,950	33	12	99.0%	100.0%
\$150,000-\$174,999	253	5.6%	161,749	160,000	33	7	99.1%	100.0%
\$175,000-\$199,999	283	6.3%	186,750	185,000	23	5	99.4%	100.0%
\$200,000-\$249,999	469	10.4%	227,525	226,450	30	6	99.1%	100.0%
\$250,000-\$299,999	383	8.5%	274,256	275,000	21	3	99.7%	100.0%
\$300,000-\$399,999	612	13.6%	352,186	350,000	30	3	99.8%	100.0%
\$400,000-\$499,999	395	8.8%	446,777	445,000	34	2	100.4%	100.0%
\$500,000-\$749,999	703	15.6%	612,059	610,000	33	0	101.1%	100.0%
\$750,000-\$999,999	220	4.9%	841,641	831,634	21	0	99.8%	100.0%
\$1,000,000 and up	117	2.6%	1,369,372	1,220,319	32	0	99.7%	100.0%



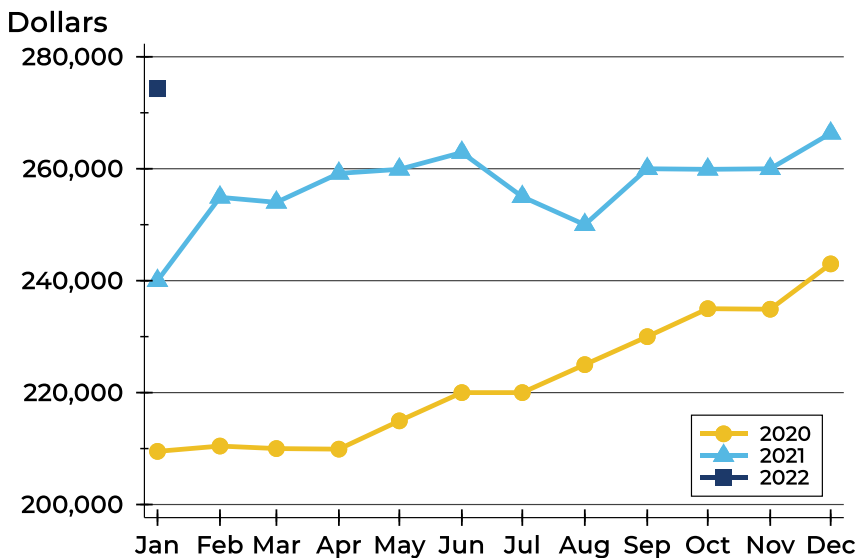
## State of Kansas Pending Contracts Analysis

### Average Price



Month	2020	2021	2022
<b>January</b>	264,370	306,232	<b>350,525</b>
<b>February</b>	265,089	314,269	
<b>March</b>	260,267	316,487	
<b>April</b>	255,472	317,994	
<b>May</b>	259,892	318,333	
<b>June</b>	270,356	321,639	
<b>July</b>	273,579	319,828	
<b>August</b>	281,064	318,642	
<b>September</b>	285,617	328,527	
<b>October</b>	293,476	328,801	
<b>November</b>	295,786	336,038	
<b>December</b>	305,754	349,489	

### Median Price

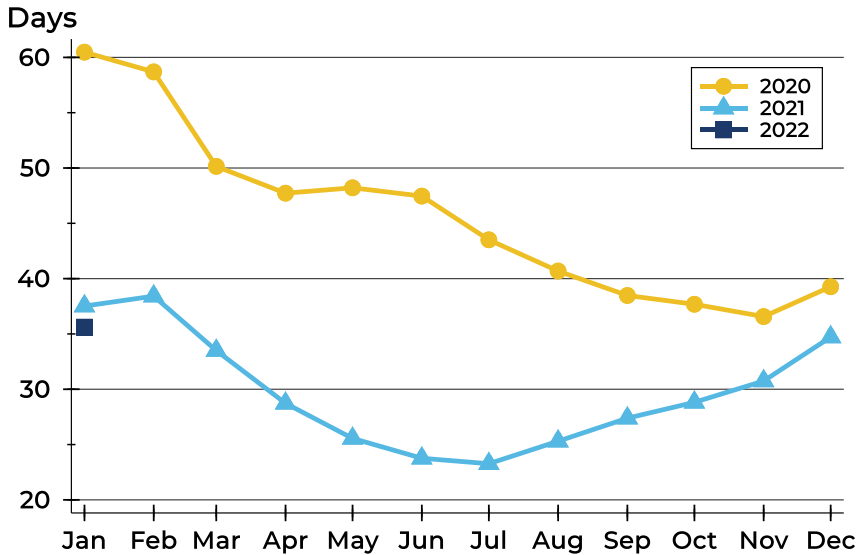


Month	2020	2021	2022
<b>January</b>	209,500	240,000	<b>274,311</b>
<b>February</b>	210,450	254,900	
<b>March</b>	210,000	254,000	
<b>April</b>	209,900	259,175	
<b>May</b>	214,950	259,900	
<b>June</b>	220,000	262,900	
<b>July</b>	220,000	255,000	
<b>August</b>	225,000	250,000	
<b>September</b>	230,000	260,000	
<b>October</b>	235,000	259,900	
<b>November</b>	234,900	260,000	
<b>December</b>	243,000	266,335	



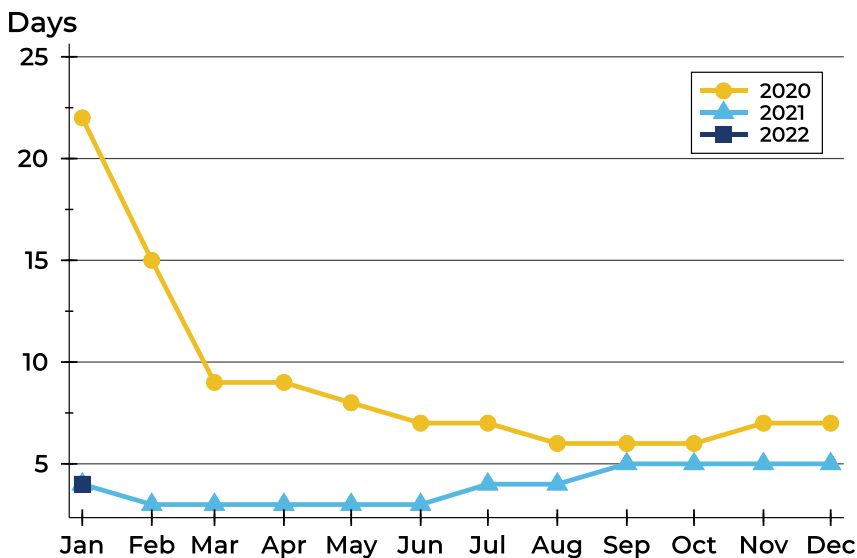
## State of Kansas Pending Contracts Analysis

### Average DOM



Month	2020	2021	2022
<b>January</b>	60	38	<b>36</b>
<b>February</b>	59	38	
<b>March</b>	50	34	
<b>April</b>	48	29	
<b>May</b>	48	26	
<b>June</b>	47	24	
<b>July</b>	44	23	
<b>August</b>	41	25	
<b>September</b>	38	27	
<b>October</b>	38	29	
<b>November</b>	37	31	
<b>December</b>	39	35	

### Median DOM



Month	2020	2021	2022
<b>January</b>	22	4	<b>4</b>
<b>February</b>	15	3	
<b>March</b>	9	3	
<b>April</b>	9	3	
<b>May</b>	8	3	
<b>June</b>	7	3	
<b>July</b>	7	4	
<b>August</b>	6	4	
<b>September</b>	6	5	
<b>October</b>	6	5	
<b>November</b>	7	5	
<b>December</b>	7	5	