

SHEET INDEX

ARCHITECTURAL
A101 PLANS
A401 INTERIOR ELEVATIONS AND DETAILS

MECHANICAL/ELECTRICAL/PLUMBING
ME101 GROUND FLOOR PLAN - MECHANICAL/ELECTRICAL DEMOLITION
ME201 GROUND FLOOR PLAN - MECHANICAL
ME301 MECHANICAL/ELECTRICAL SCHEDULES

SPECIFICATIONS

DIVISION 1 - GENERAL REQUIREMENTS

SECTION 011000 - GENERAL PROJECT INFORMATION

- PART 1 - GENERAL
- PROJECT INFORMATION
 - PROJECT IDENTIFICATION: KANSAS STATEHOUSE SNACKSHOP
 - PROJECT LOCATION: 300 SW 10TH STREET, TOPEKA KS 66612
 - OWNER: STATE OF KANSAS
 - WORK COVERED BY CONTRACT DOCUMENTS
 - THE WORK OF THE PROJECT IS DEFINED BY THE CONSTRUCTION DOCUMENTS AND CONSISTS OF THE FOLLOWING:
 - THE KANSAS STATEHOUSE SNACK BAR IS LOCATED IN AN EXISTING SPACE IN THE STATEHOUSE. THE INTERIOR OF THE MAIN AREA WILL BE FURRED OUT FROM THE FURTHEST PROJECTING POINT OF THE STONE BELOW 5' LEVEL. THE WALLS OF THE DISHWASHING AREA WILL BE FURRED OUT. ALL GYPSUM SURFACES NEW AND EXISTING WILL BE PAINTED WITH AN EPOXY PAINT. ALL OF THE FLOORS WILL BE FINISHED WITH A RESINOUS FLOORING AND 6" INTEGRAL BASE.
 - SEE GENERAL NOTES

DIVISION 6 - WOOD AND PLASTICS

SECTION 064600 - WOOD TRIM

- PART 2 - PRODUCTS
- MATERIALS
 - WOOD SPECIES: PECAN, PLAIN SAWED/SLICED TO MATCH EXIST WOODWORK IN STATEHOUSE VISITOR CENTER.
- PART 3 - EXECUTION
- INSTALLATION
 - QUALITY STANDARD: INSTALL WOODWORK TO COMPLY WITH AWWI SECTION 1700 FOR TYPE OF WOODWORK INVOLVED.
 - INSTALL WOODWORK LEVEL, PLUMB, TRUE, AND STRAIGHT. SHIM AS REQUIRED WITH CONCEALED SHIMS. INSTALL LEVEL AND PLUMB (INCLUDING TOPS) TO A TOLERANCE OF 1/8 INCH IN 96 INCHES.
 - SCRIBE AND CUT WOODWORK TO FIT ADJOINING CONSTRUCTION AND EXISTING CONDITIONS, AND REFINISH CUT SURFACES AND REPAIR DAMAGED FINISH AT CUTS.
 - ANCHOR WOODWORK TO ANCHORS OR BLOCKING BUILT IN OR DIRECTLY ATTACHED TO SUBSTRATES. SECURE WITH COUNTERSUNK, CONCEALED FASTENERS AND BLIND NAILING AS REQUIRED FOR COMPLETE INSTALLATION. USE FINE FINISHING NAILS FOR EXPOSED FASTENING. COUNTERSUNK AND FILLED FLUSH WITH WOODWORK AND MATCHING FINAL FINISH IF TRANSPARENT FINISH IS INDICATED.
 - STANDING AND RUNNING TRIM: INSTALL WITH MINIMUM NUMBER OF JOINTS POSSIBLE. USING FULL-LENGTH PIECES (FROM MAXIMUM LENGTH OF LUMBER AVAILABLE) TO GREATEST EXTENT POSSIBLE. DO NOT USE PIECES LESS THAN 60 INCHES LONG, EXCEPT WHERE SHORTER SINGLE-LENGTH PIECES ARE NECESSARY. SCARF RUNNING JOINTS AND STAGGER IN ADJACENT AND RELATED MEMBERS.
 - INSTALL STANDING AND RUNNING TRIM WITH NO MORE VARIATION FROM A STRAIGHT LINE THAN 1/8 INCH IN 96 INCHES.

SECTION 066116 - SOLID SURFACING FABRICATIONS

- PART 2 - PRODUCTS
- MATERIAL AND COMPONENTS
 - SOLID SURFACING MATERIAL: HOMOGENEOUS SOLID SHEETS OF FILLED PLASTIC RESIN COMPLYING WITH ISSFA-2 BASIS OF DESIGN: FORMICA SOLID SURFACING BY FORMICA GROUP
 - COLORS AND PATTERNS: AS SELECTED BY ARCHITECT FROM MANUFACTURERS FULL RANGE
 - ACCESSORIES
 - ADHESIVES: FOR SEAMS AND EDGES; COLOR TO BLEND WITH SHEET MATERIAL
 - FABRICATION
 - WINDOW SILLS: 1/2" THICK SOLID SURFACING
- PART 3 - EXECUTION
- PREPARATION AND INSTALLATION
 - COMPLY WITH MANUFACTURER'S WRITTEN INSTRUCTIONS AND RECOMMENDATIONS
 - SOLID SURFACE FABRICATIONS FOR WINDOW SILLS AS INDICATED, INCLUDING TRIM AND MATERIAL NEEDED FOR A COMPLETE INSTALLATION

DIVISION 8 - OPENINGS

SECTION 087100 - DOOR HARDWARE

PART 2 - PRODUCTS

- MATERIAL
 - PROVIDE THE FOLLOWING DOOR HARDWARE AT OPENING 023-N.1 AND 023-N.2 (CONTRACTOR TO VERIFY EXISTING HARDWARE AND CONDITIONS AND MODIFY ONLY IF NECESSARY.)

QTY	UM	DESCRIPTION	MANUFACTURER	PRODUCT	DOOR NUMBER	NOTES
3	EA	EXISTING HINGES	--	--	023-N.1, 023-N.2	1
1	EA	DEADLOCK	CORBIN	DL4017-LC-US4	023-N.1, 023-N.2	2
1	EA	EXISTING CYLINDER	--	--	023-N.1, 023-N.2	1
1	EA	EXISTING PUSH PLATE	--	--	023-N.1, 023-N.2	1
1	EA	EXISTING PULL PLATE	--	--	023-N.1, 023-N.2	1
1	EA	EXISTING ELECTRO MECH CLOSER	--	--	023-N.1, 023-N.2	1
1	EA	EXISTING KICKPLATE	--	--	023-N.1, 023-N.2	1

- NOTES:
- VERIFY EXISTING HARDWARE TO BE IN COMPLETE WORKING ORDER.
 - VERIFY EXISTING HARDWARE IS EQUAL TO THAT SPECIFIED.

- PART 3 - EXECUTION
- PREPARATION AND INSTALLATION
 - PREPARE AND TOUCH-UP PAINT ON DOORS TO BLEND WITH ADJACENT SURFACES AS NECESSARY.
 - PREPARE AND TOUCH-UP STAINED FINISH ON FRAMES AND SURROUNDS TO BLEND WITH ADJACENT SURFACES AS NECESSARY.
 - REINSTALL ALL MISSING WOOD FRAME AND SURROUND COMPONENTS.
 - ADJUST AND REVISE DOORS AND FRAMES AS NECESSARY TO OPERATE SMOOTHLY. TOUCH-UP FINISHES NECESSARY.
 - COORDINATE CLOSER VERIFICATION WITH ELECTRICAL AS NECESSARY. ALL ELECTRICAL SHALL BE CONCEALED WITHIN WOOD CASING. REPAIR AND REFINISH WOOD AS NECESSARY.

DIVISION 9 - FINISHES

SECTION 092216 NON-STRUCTURAL METAL FRAMING

- PART 2 - PRODUCTS
- STEEL PARTITION AND SOFFIT FRAMING
 - COMPONENTS, GENERAL: AS FOLLOWS:
 - CURVED METAL WITH ASTM C 754 FOR CONDITIONS INDICATED.
 - STEEL SHEET COMPONENTS: COMPLYING WITH ASTM C 645 REQUIREMENTS FOR METAL AND WITH ASTM A 653/A 653M, G60, HOT-DIP GALVANIZED ZINC COATING
 - STEEL STUDS AND RUNNERS: ASTM C 645
 - MINIMUM BASE METAL THICKNESS: MINIMUM 0.0312 INCH (20 GAUGE) FOR STUD FRAMING, EXCEPT WHERE RECOMMENDED BY THE MANUFACTURER FOR THE CONDITIONS/PARTITION HEIGHT REQUIRED
 - DEPTH: AS INDICATED ON THE DRAWINGS, BUT NOT LESS THAN THE DEPTH RECOMMENDED BY THE MANUFACTURER FOR THE CONDITIONS/PARTITION HEIGHT REQUIRED
 - FOR SOFFIT CONDITIONS PROVIDE MINIMUM 0.0598 INCH (16 GAUGE) METAL FOR STUD FRAMING.
 - STEEL SUSPENDED CEILING AND SOFFIT FRAMING
 - COMPONENTS, GENERAL: COMPLY WITH ASTM C 754 FOR CONDITIONS INDICATED.
 - TIE WIRE: ASTM A 641/A 641M, CLASS 1 ZINC COATING, SOFT TEMPER, 0.0625-INCH- DIAMETER WIRE, OR DOUBLE STRAND OF 0.0475-INCH- DIAMETER WIRE.
 - HANGER ATTACHMENTS TO CONCRETE: AS FOLLOWS:
 - ANCHORS: FABRICATED FROM CORROSION-RESISTANT MATERIALS WITH HOLES OR LOOPS FOR ATTACHING HANGER WIRES AND CAPABLE OF SUSTAINING, WITHOUT FAILURE, A LOAD EQUAL TO 5 TIMES THAT IMPOSED BY CONSTRUCTION AS DETERMINED BY TESTING ACCORDING TO ASTM E 488 BY A QUALIFIED INDEPENDENT TESTING AGENCY.
 - TYPE: POST INSTALLED, EXPANSION ANCHOR.
 - HANGERS: AS FOLLOWS:
 - WIRE HANGERS: ASTM A 641/A 641M, CLASS 1 ZINC COATING, SOFT TEMPER, 0.162-INCH DIAMETER.
 - GRID SUSPENSION SYSTEM FOR INTERIOR CEILINGS: ASTM C 645, DIRECT-HUNG SYSTEM COMPOSED OF MAIN BEAMS AND CROSS-FURRING MEMBERS THAT INTERLOCK.

- PART 3 - EXECUTION
- INSTALLING STEEL FRAMING, GENERAL
 - INSTALLATION STANDARDS: ASTM C 754, AND ASTM C 840 REQUIREMENTS THAT APPLY TO FRAMING INSTALLATION.
 - INSTALL SUPPLEMENTARY FRAMING, BLOCKING, AND BRACING AT TERMINATIONS IN GYPSUM BOARD ASSEMBLIES TO SUPPORT FIXTURES, EQUIPMENT SERVICES, HEAVY TRIM, ACCESSORIES, FURNISHINGS, OR SIMILAR CONSTRUCTION. COMPLY WITH DETAILS INDICATED AND WITH GYPSUM BOARD MANUFACTURER'S WRITTEN RECOMMENDATIONS OR, IF NONE AVAILABLE, WITH UNITED STATES GYPSUMS "GYPSUM CONSTRUCTION HANDBOOK."
 - ISOLATE STEEL FRAMING FROM BUILDING STRUCTURE AT LOCATIONS INDICATED TO PREVENT TRANSFER OF LOADING IMPOSED BY STRUCTURAL MOVEMENT.
 - ISOLATE CEILING ASSEMBLIES WHERE THEY ABUT OR ARE PENETRATED BY BUILDING STRUCTURE.

SECTION 092900 - GYPSUM BOARD

- PART 2 - PRODUCTS
- INTERIOR GYPSUM WALLBOARD
 - PANEL SIZE: PROVIDE MAXIMUM LENGTHS AND WIDTHS AVAILABLE THAT WILL MINIMIZE JOINTS IN EACH AREA AND CORRESPOND WITH SUPPORT SYSTEMS INDICATED
 - MOISTURE RESISTANT GYPSUM WALLBOARD: ASTM C 1396/C 1396M, WITH MOISTURE- AND MOLD-RESISTANT CORE AND PAPER SURFACES
 - TYPE X
 - THICKNESS: 5/8 INCH
 - LONG EDGES: TAPERED AND FEATURED FOR PRE-FILLING
 - MOLD RESISTANCE: ASTM D 3273, SORE OF 10 AS RATED ACCORDING DO ASTM D 3274.
 - JOINT TREATMENT MATERIALS
 - GENERAL: COMPLY WITH ASTM C 475.
 - JOINT TAPE: PAPER
 - AUXILIARY MATERIALS
 - GENERAL: PROVIDE AUXILIARY MATERIALS THAT COMPLY WITH REFERENCED INSTALLATION STANDARDS AND MANUFACTURER'S RECOMMENDATIONS.
 - STEEL DRILL SCREWS: ASTM C 1002, UNLESS OTHERWISE INDICATED.
 - USE SCREWS COMPLYING WITH ASTM C 954 FOR FASTENING PANELS TO STEEL MEMBERS FROM 0.033 TO 0.112 INCH THICK.
 - FOR FASTENING CEMENTITIOUS BACKER UNITS, USE SCREWS OF TYPE AND SIZE RECOMMENDED BY PANEL MANUFACTURER.

- PART 3 - EXECUTION
- APPLYING AND FINISHING PANELS
 - COMPLY WITH ASTM C 840
 - GYPSUM BOARD CEILING LEVELS: FINISH PANELS TO LEVEL INDICATED AND ACCORDING TO ASTM C 840
 - LEVEL 4: AT PANEL SURFACES THAT WILL BE EXPOSED TO VIEW UNLESS OTHERWISE INDICATED.

SECTION 095113 - ACOUSTICAL PANEL CEILINGS

- PART 2 - PRODUCTS
- ACOUSTICAL PANELS, GENERAL: COMPLY WITH ASTM E 1264
 - BASIS OF DESIGN: USG INTERIORS INC, ECLIPSE CLIMA PLUS #76777
 - METAL SUSPENSION SYSTEMS, GENERAL: COMPLY WITH ASTM C 635
 - BASIS OF DESIGN: USG INTERIORS, INC. DON DX.
 - METAL EDGE MOLDINGS AND TRIM - AS RECOMMENDED BY MANUFACTURER

- PART 3 - EXECUTION
- PREPARATION AND INSTALLATION
 - COMPLY WITH MANUFACTURER'S WRITTEN INSTRUCTIONS AND RECOMMENDATIONS.
 - GENERAL: INSTALL ACOUSTICAL PANEL CEILINGS TO COMPLY WITH ASTM C 636 AND SEISMIC REQUIREMENTS INDICATED, PER MANUFACTURER'S WRITTEN INSTRUCTIONS AND CISCAs "CEILING SYSTEMS HANDBOOK."

SECTION 096723 - RESINOUS FLOORING

- PART 2 - PRODUCTS
- MATERIAL
 - SEAMLESS FLOOR COVERING WHERE CALLED FOR ON THE DRAWINGS. BASIS OF DESIGN: DESCO QUARTZ CREMONA (NO BROADCAST ALLOWED) FLOOR MANUFACTURES BY DESCO COATINGS, INC.
 - PROVIDE COVE BASE WITH 1" RADIUS COVE AS INDICATED ON DRAWINGS AND VERTICAL APPLICATION OF FLOORING TO HEIGHT INDICATED.
 - BINDER AND ALL SUCCESSIVE GROUT AND TOP COATS SHALL BE 100% SOLIDS CLEAR/EPOXY RESIN. CERAMIC COATED QUARTZ AGGREGATES AS SUPPLIED BY MANUFACTURER ARE TO BE USED TO ACHIEVE ALL COLOR. NO PIGMENTED EPOXY BASE OR TOP COATS ALLOWED.
 - PERFORMANCE CHARACTERISTICS TO COMPLY WITH MANUFACTURER'S PRESCRIBED MINIMUM PERFORMANCE STANDARDS.

- PART 3 - EXECUTION
- PREPARATION AND APPLICATION
 - COMPLY WITH MANUFACTURER'S WRITTEN INSTRUCTIONS AND RECOMMENDATIONS TO CREATE CONTINUOUSLY FLAT AND TRUE SURFACES.
 - PREPARE ALL EXISTING FLOORING AND WALL CONDITIONS AS NECESSARY FOR NEW RESINOUS FLOORING AND BASE.

SECTION 099123 - INTERIOR PAINTING

- PART 2 - PRODUCTS
- PAINT, GENERAL: BASIS OF DESIGN - BENJAMIN MOORE ULTRA SPEC 500 LOW SHEEN (N537)
 - COLORS: AS SELECTED BY ARCHITECT FROM MANUFACTURER'S FULL RANGE
 - EPOXY PAINT: BASIS OF DESIGN - COROTECH HIGH PERFORMANCE WATERBORNE WALL EPOXY - SEMI GLOSS (V341)
 - COMPLY WITH MPI 151 LIGHT INDUSTRIAL APPLICATIONS.
 - COLORS: AS SELECTED BY ARCHITECT FROM MANUFACTURER'S FULL RANGE

- PART 3 - EXECUTION
- PREPARATION AND APPLICATION
 - COMPLY WITH MANUFACTURER'S WRITTEN INSTRUCTIONS AND RECOMMENDATIONS IN "MPI ARCHITECTURAL PAINTING SPECIFICATION MANUAL" APPLICABLE TO SUBSTRATES INDICATED
 - INTERIOR PAINTING LOCATIONS

EXISTING GYP BOARD	EPOXY PAINT
WALL GYP BOARD	EPOXY PAINT
SOFFIT GYP BOARD	PAINT
EXISTING MASONRY BLOCK	EPOXY PAINT
EXISTING BRICK	PAINT
EXISTING EXPOSED STEEL	PAINT

SECTION 099300 - STAINING AND TRANSPARENT FINISHING

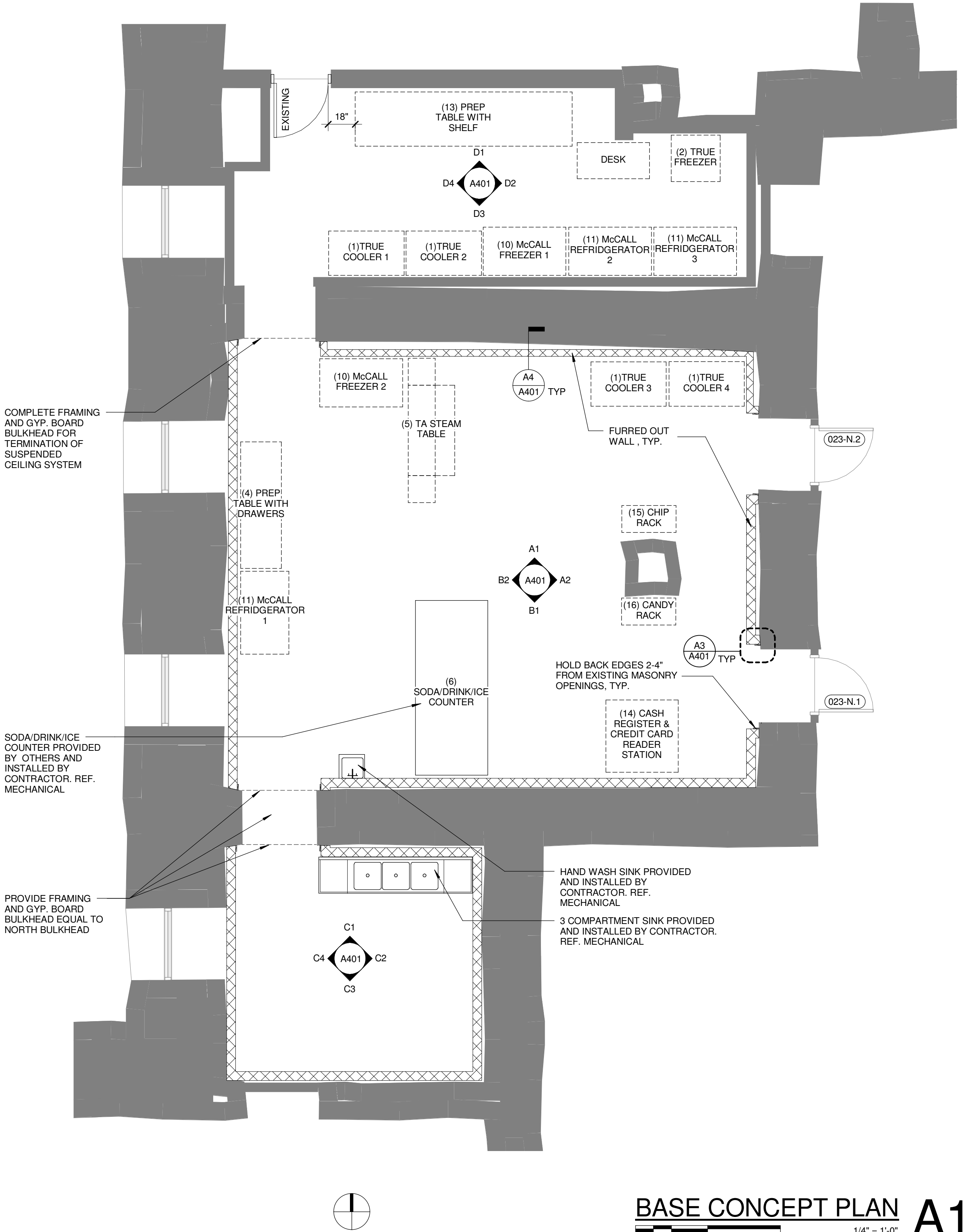
- PART 2 - PRODUCTS
- MATERIALS
 - TRANSPARENT FINISH: COMPLY WITH REQUIREMENTS INDICATED BELOW FOR GRADE, FINISH SYSTEM, STAINING, AND SHEEN, WITH SHEEN MEASURED ON 60- DEGREE GLOSS METER PER ASTM D 523:
 - GRADE: PREMIUM.
 - AWI FINISH SYSTEM TR-4: CONVERSION VARNISH.
 - STAINING:
 - ARCHITECT'S INTENT FOR STAIN COLORS IS TO MATCH EXISTING ADJACENT WOODWORK.
 - GROUND FLOOR, TYPICAL, TO MATCH SOUTH WING PECAN STAIN AT THE GROUND FLOOR.
 - WASH COAT FOR STAINED FINISH: APPLY A VINYL WASH COAT TO WOODWORK MADE FROM CLOSED-GRAIN WOOD BEFORE STAINING AND FINISHING.
 - OPEN FINISH FOR OPEN-GRAIN WOODS: DO NOT APPLY FILLER TO OPEN-GRAIN WOODS.
 - SHEEN: SEMIGLOSS, 55-75 GLOSS UNITS.

- PART 3 - EXECUTION
- PREPARATION AND APPLICATION
 - COMPLY WITH MANUFACTURER'S WRITTEN INSTRUCTIONS AND RECOMMENDATIONS TO SUBSTRATES INDICATED.

GENERAL NOTES

THESE NOTES ARE A PARTIAL LIST SUPPLEMENTAL TO THE REQUIREMENTS CONTAINED IN THE SPECIFICATIONS AND GENERAL CONDITIONS OF THE CONTRACT FOR THE CONSTRUCTION. WHERE ONE IS MORE RESTRICTIVE, IT SHALL TAKE PRECEDENCE.

- WHERE ANY MATERIAL OF CONSTRUCTION MAY BE INDICATED, NOTED, NAMED, DESCRIBED, OR REFERENCED (HOWEVER BRIEFLY) IN THE PROJECT DOCUMENTS BUT MAY NOT BE FULLY DETAILED OR FULLY SPECIFIED, SUCH MATERIAL SHALL BE FURNISHED AND INSTALLED IN ACCORDANCE WITH CURRENT (1) BUILDING CODES, ORDINANCES, AND REGULATIONS, (2) MATERIAL MANUFACTURER'S RECOMMENDATIONS AND SPECIFICATIONS, (3) GENERALLY ACCEPTED GOOD CONSTRUCTION PRACTICE STANDARDS. SUCH MATERIAL SHALL BE FURNISHED AND INSTALLED COMPLETE WITH HARDWARE, ACCESSORIES, ATTACHMENTS, CONTROLS AND OTHER DEVICES REQUIRED FOR THE PROPER INSTALLATION TO PROVIDE A COMPLETED OPERATIONAL SYSTEM WITH THE QUALITY WORKMANSHIP NOT LESS THAN INDUSTRY ACCEPTED STANDARDS OF THAT TRADE.
- COORDINATE WORK THROUGH THE USE OF SHOP DRAWINGS PREPARED BY EACH TRADE, APPROVED BY THE OWNER.
- PRIOR TO THE INSTALLATION OF THEIR WORK, EACH SUBCONTRACTOR SHALL INSPECT THE SUBSTANCE AND OTHER PREVAILING CONDITIONS AND REPORT TO THE GENERAL CONTRACTOR IN WRITING ALL UNSATISFACTORY CONDITIONS. FURTHER, THEY SHALL MAKE CERTAIN SUCH CONDITIONS HAVE BEEN CORRECTED BEFORE PROCEEDING WITH HIS INSTALLATIONS.
- ERECT, INSTALL AND SECURE BUILDING COMPONENTS IN A STRUCTURALLY SOUND AND APPROPRIATE MANNER.
- WORK TO BE ACCOMPLISHED IN A SAFE AND PROPER MANNER IN ACCORDANCE WITH THE PROVISIONS CONTAINED IN THE OCCUPATIONAL SAFETY AND HEALTH ADMINISTRATION MANUAL. LIABILITY FOR INJURIES IS THE CONTRACTORS RESPONSIBILITY AND INSURANCE FOR SUCH SHALL BE REQUIRED AND SUBMITTED TO THE OWNER AS PROOF.
- THE CONTRACTOR HEREBY WARRANTS TO THE OWNER ALL MATERIALS AND EQUIPMENT FURNISHED AND INSTALLED UNDER THE CONTRACT WILL BE FREE FROM FAULTS AND DEFECTS FOR A PERIOD OF ONE YEAR AFTER ACCEPTANCE AND OCCUPANCY. WARRANTY TO INCLUDE ALL MATERIALS, EQUIPMENT AND LABOR FOR CORRECTION OF DEFECTIVE WORK AS WELL AS THE ADJACENT WORK DAMAGED OR AFFECTED BY THE CORRECTIVE MEASURES.
- ALL EQUIPMENT AND FURNISHINGS IDENTIFIED BY DASHED LINES, IN ADDITION TO THE (6) SODA/DRINK/ICE COUNTER, ON BASE CONCEPT PLAN AA-A101, SHALL BE PROVIDED BY OTHERS AND INSTALLED BY THE CONTRACTOR. CONTRACTOR SHALL COORDINATE INSTALLATION WITH NEW MECHANICAL, ELECTRICAL, AND PLUMBING COMPONENTS.



BASE CONCEPT PLAN A1
0 2' 4' 8' 1/4" = 1'-0"

DATE: 09/22/2017

KANSAS DEPARTMENT OF ADMINISTRATION
OFFICE OF FACILITIES & PROPERTY MANAGEMENT
700 SW HARRISON, SUITE 1200
TOPEKA, KS 66603
785-296-4693

KANSAS STATEHOUSE SNACK SHOP
KANSAS DEPARTMENT OF ADMINISTRATION
PROJECT NO. TMA-2075
300 SW 10TH STREET
TOPEKA, KS 66612

TREANORHL
719 SW Van Buren St., Suite 200
Topeka, Kansas 66612
Office: 765.235.0012
www.treanorhl.com



DRAWN BY: MS
CHECKED BY: KVK

REVISIONS

NO.	DESCRIPTION	DATE

A101

PLANS

TreanorHL.NO. HP.16.020.00B

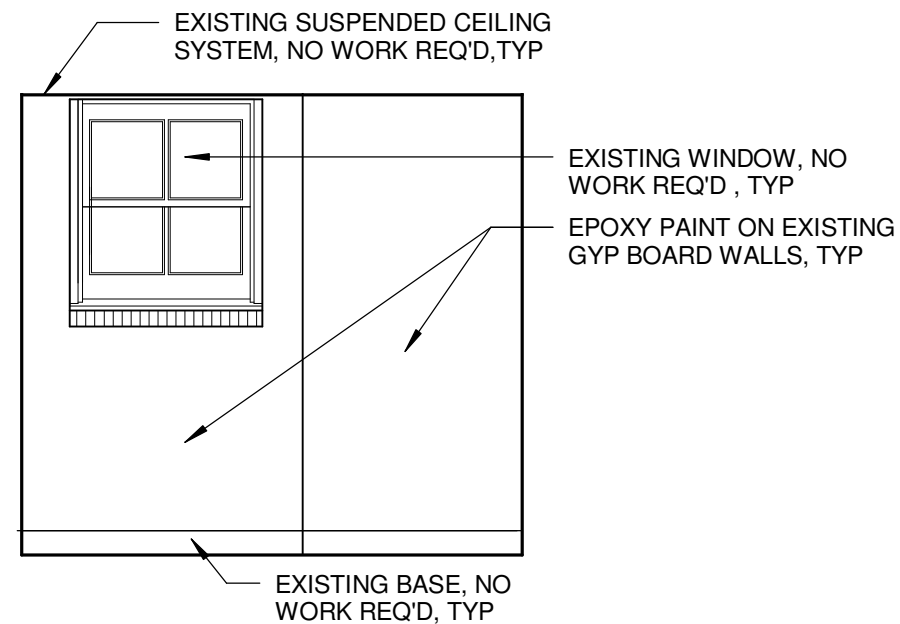
5

4

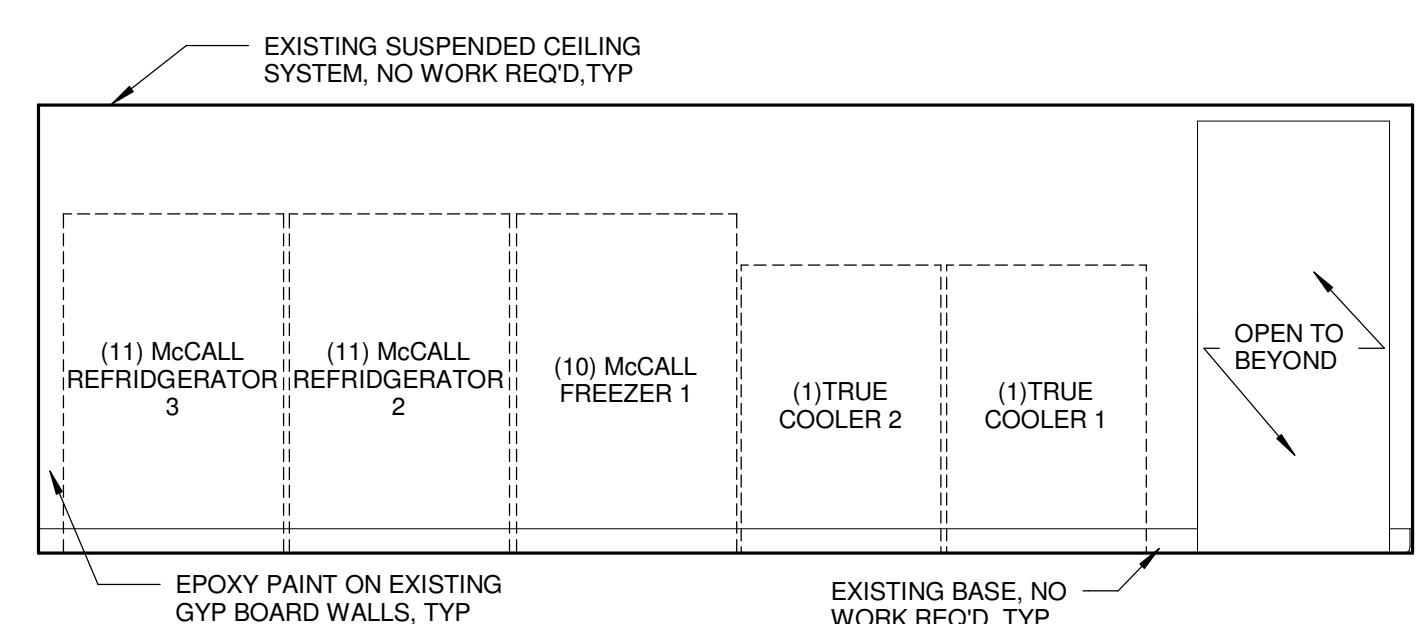
3

2

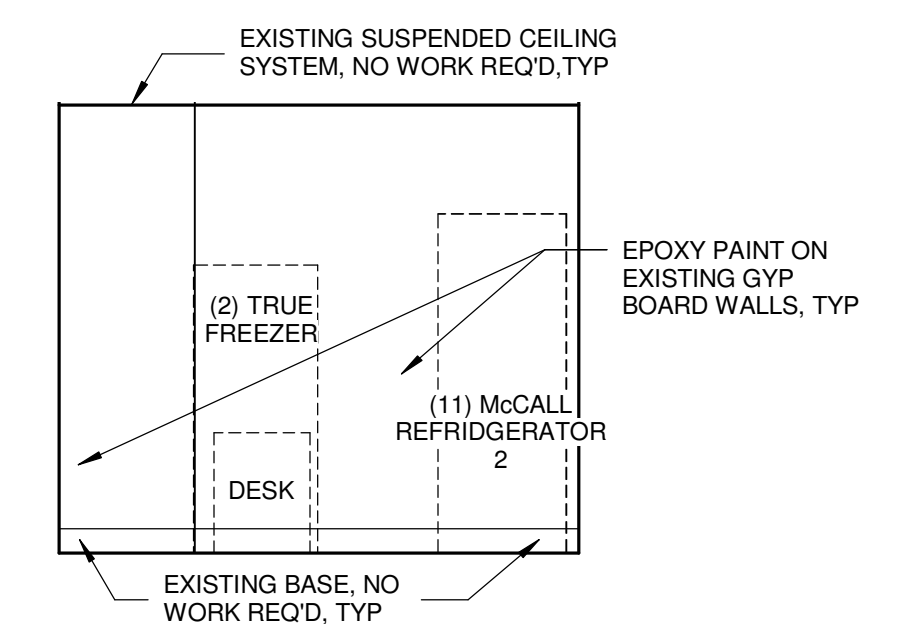
1



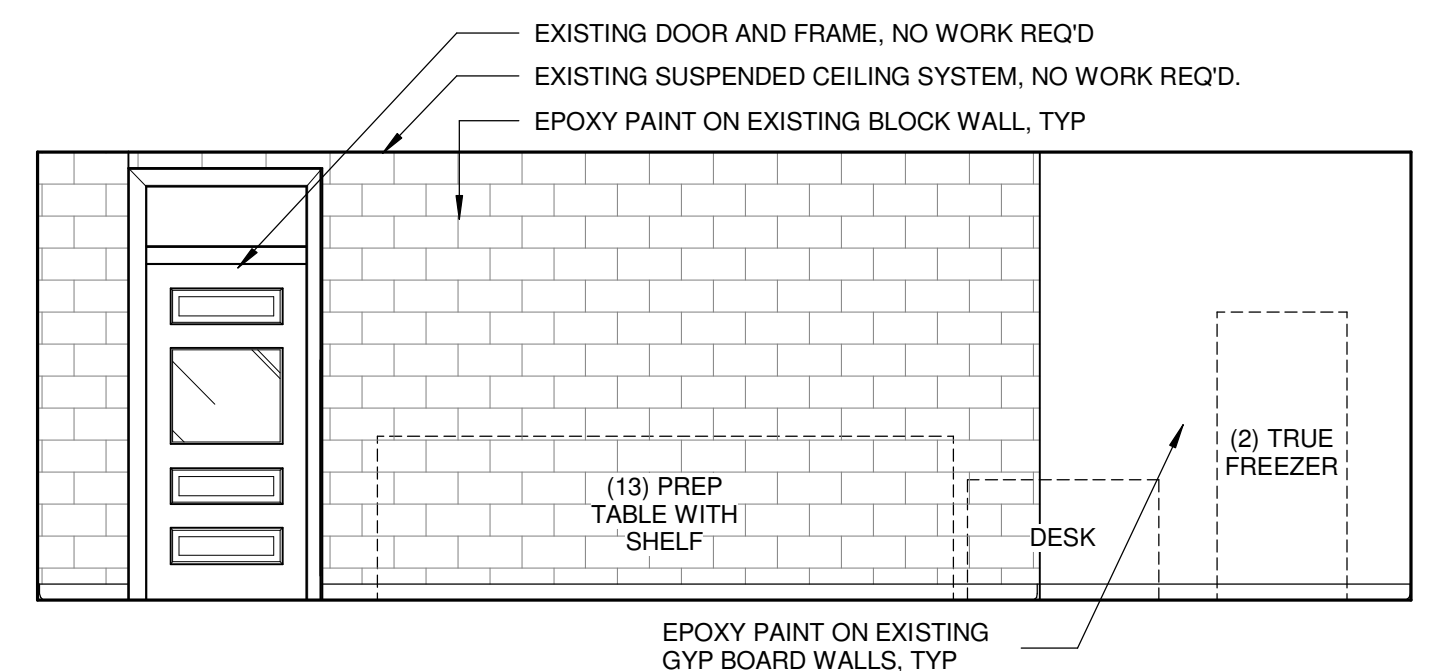
FOOD STORAGE WEST D4
1/4" = 1'-0"



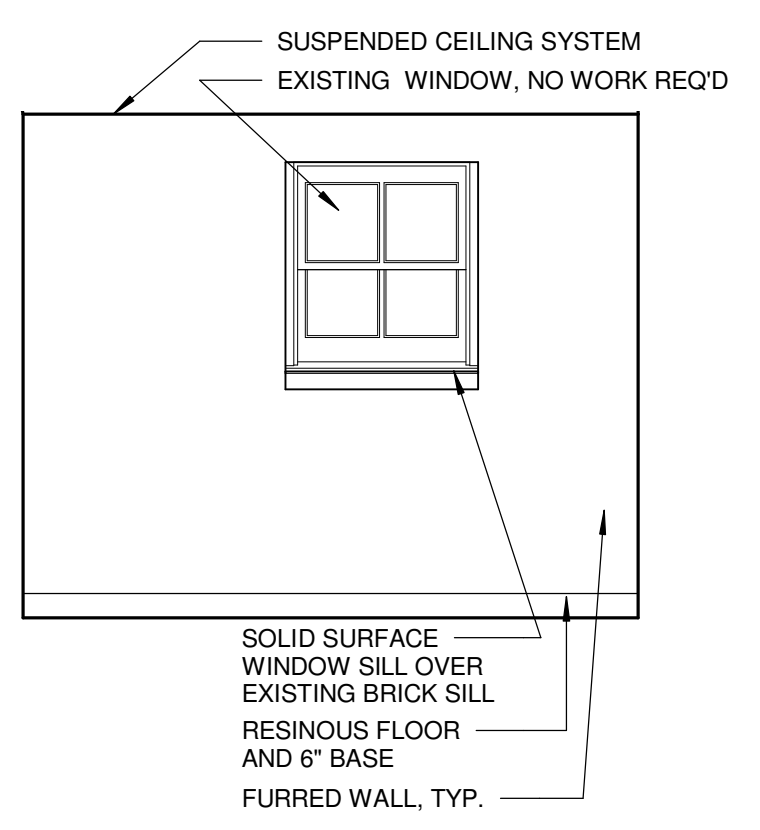
FOOD STORAGE SOUTH D3
1/4" = 1'-0"



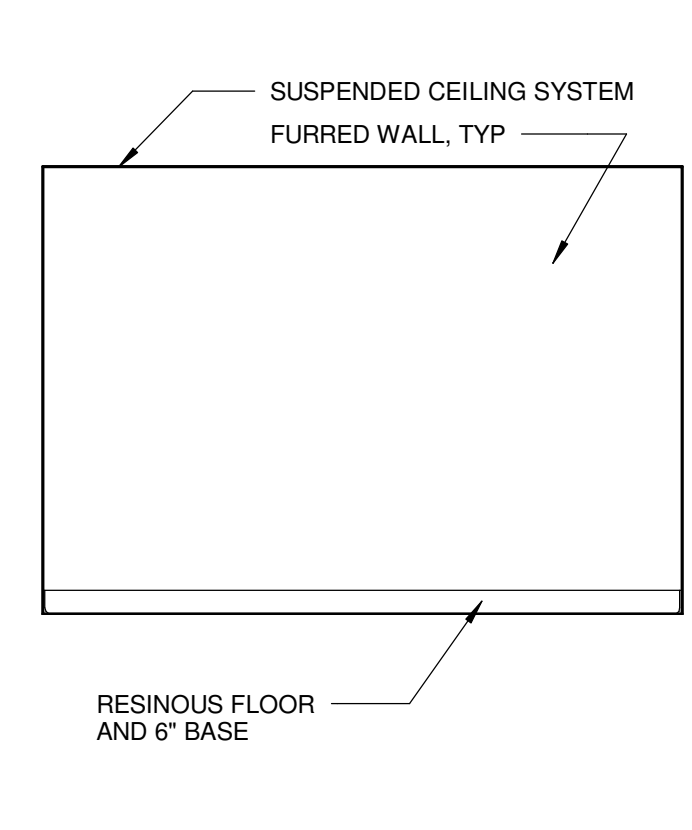
FOOD STORAGE EAST D2
1/4" = 1'-0"



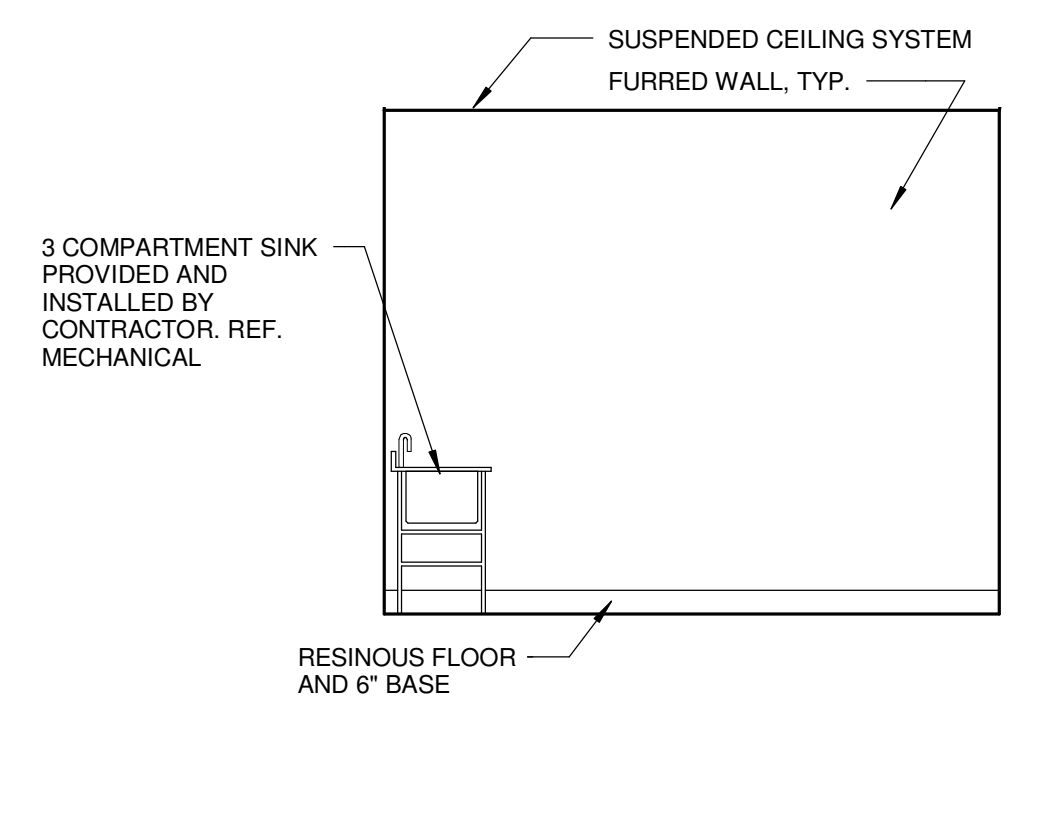
FOOD STORAGE NORTH D1
1/4" = 1'-0"



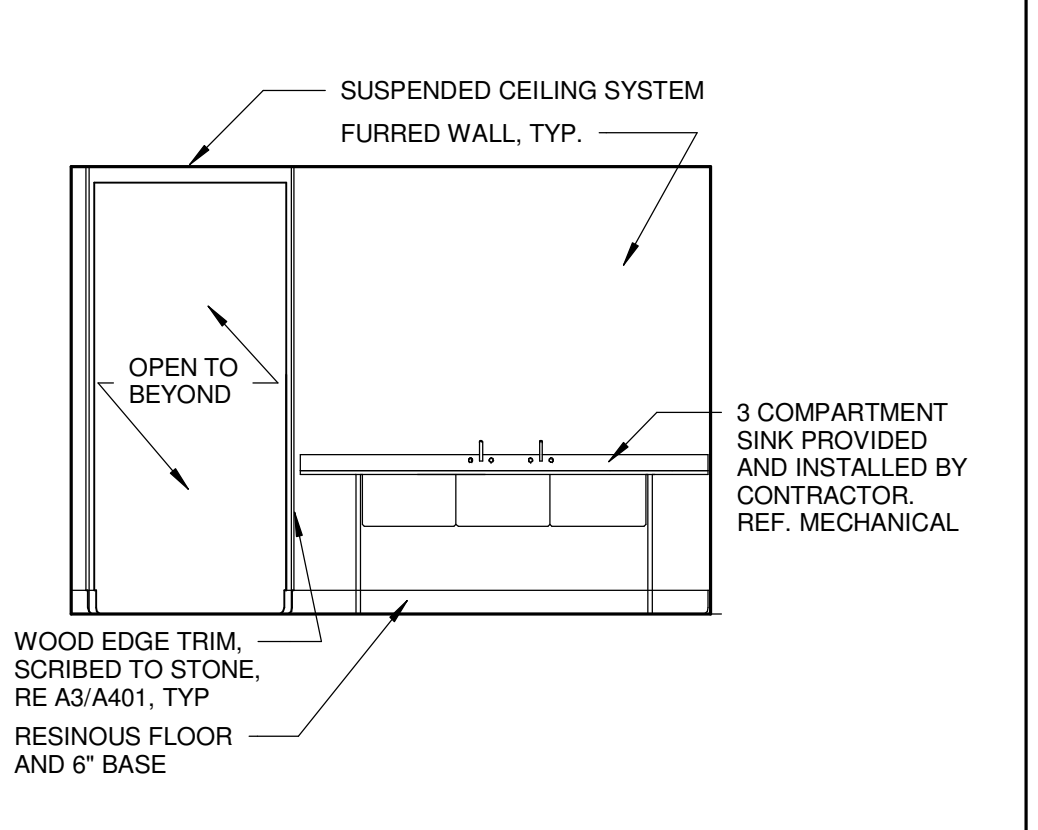
DISHWASHING AREA WEST C4
1/4" = 1'-0"



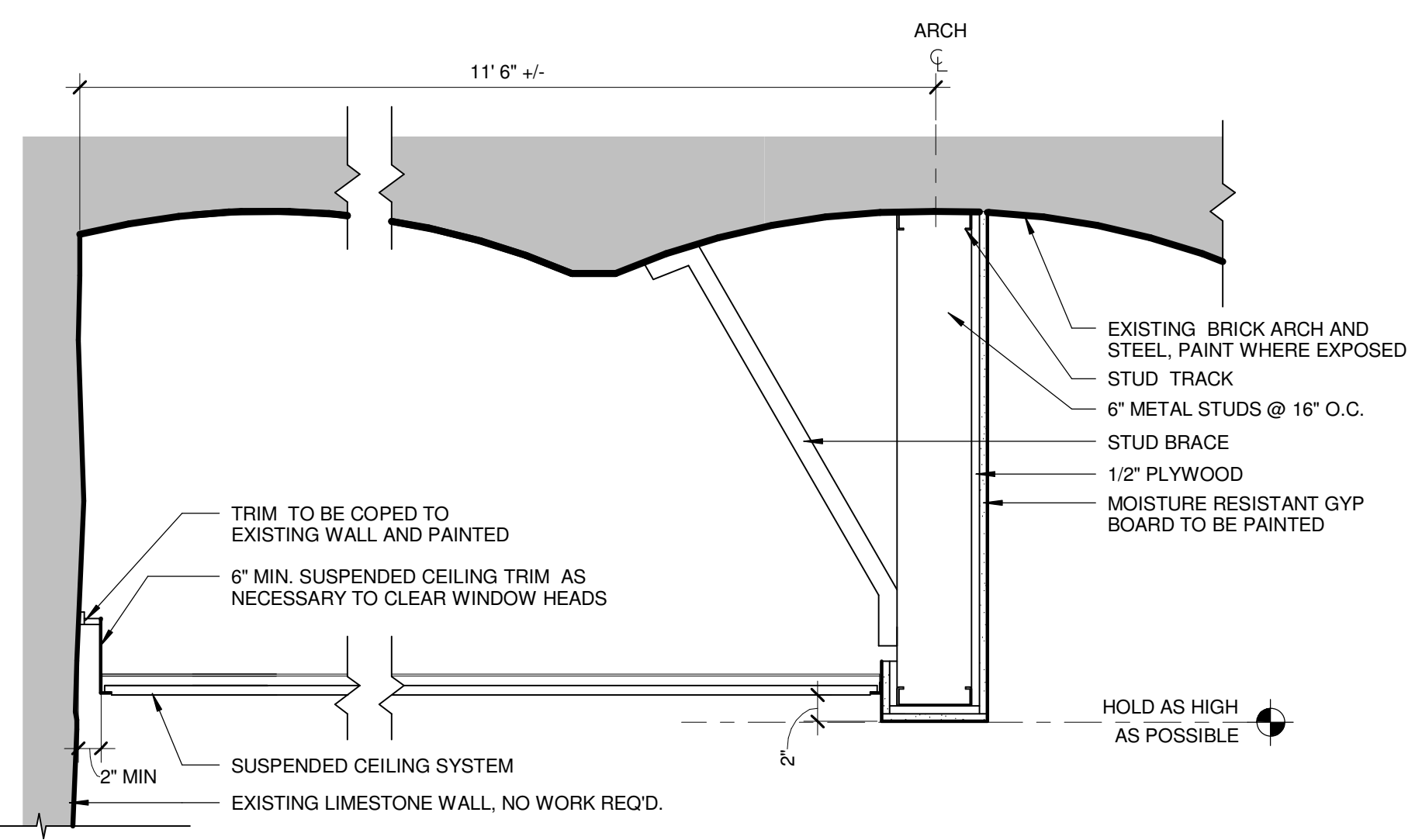
DISHWASHING AREA SOUTH C3
1/4" = 1'-0"



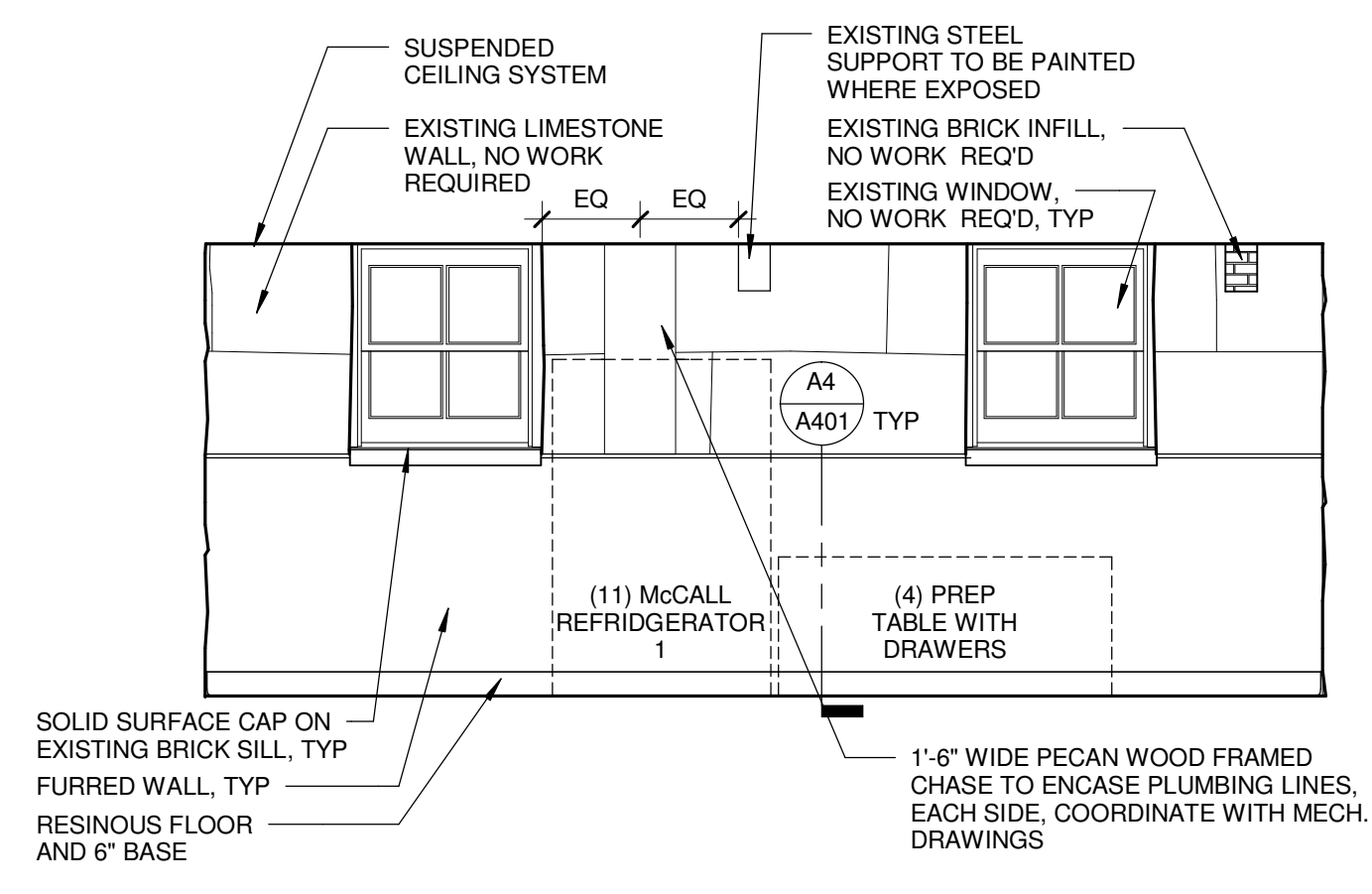
DISHWASHING AREA EAST C2
1/4" = 1'-0"



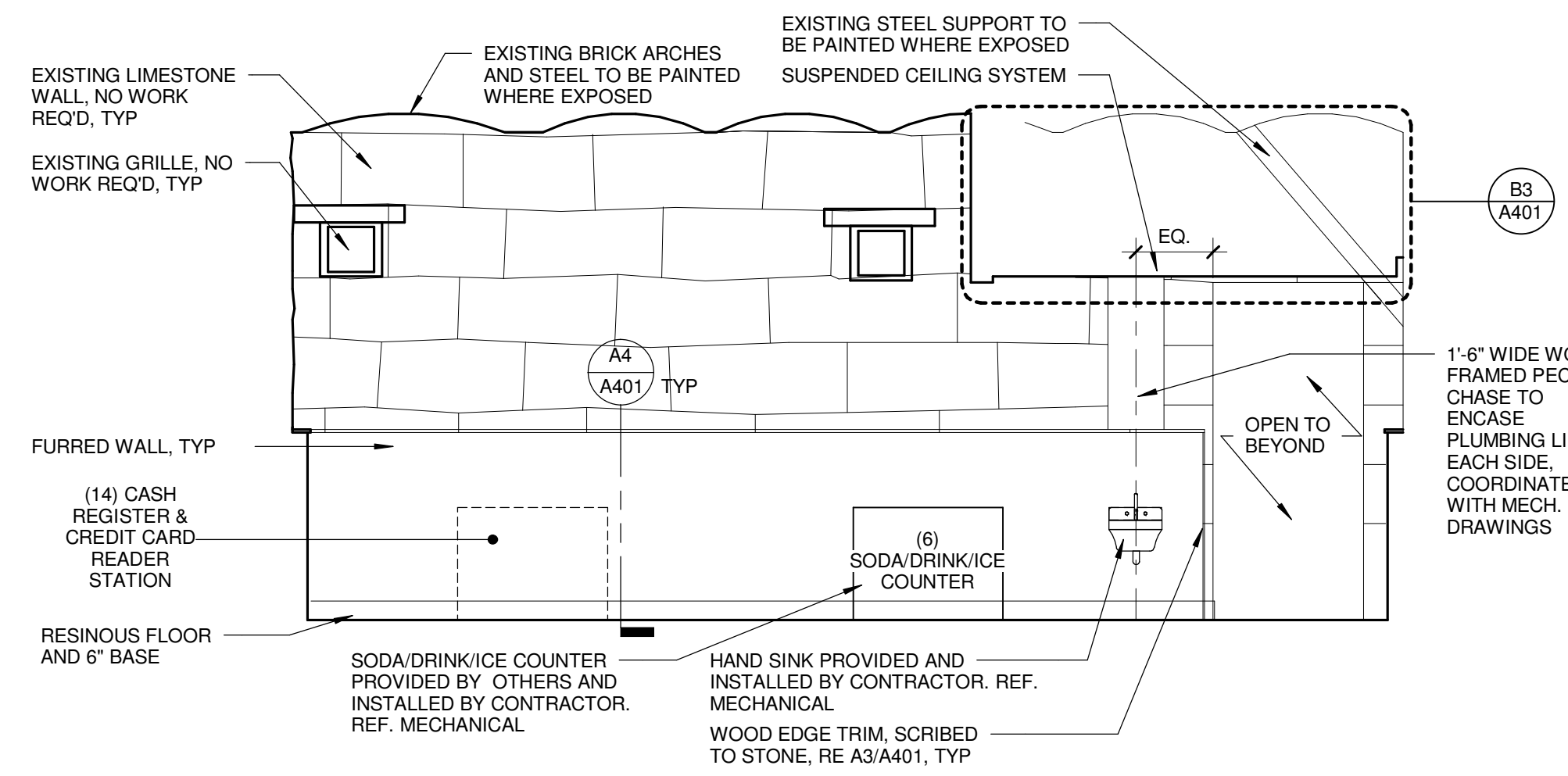
DISHWASHING AREA NORTH C1
1/4" = 1'-0"



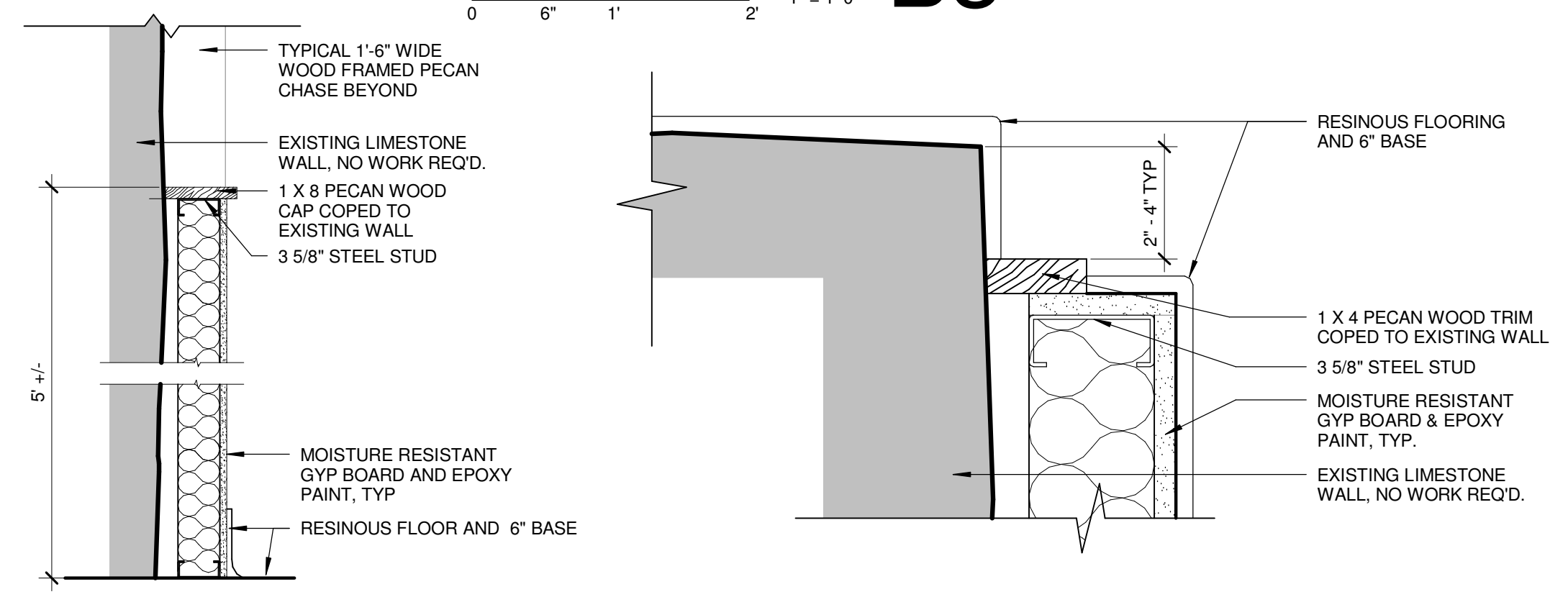
SOFFIT SECTION B3
1" = 1'-0"



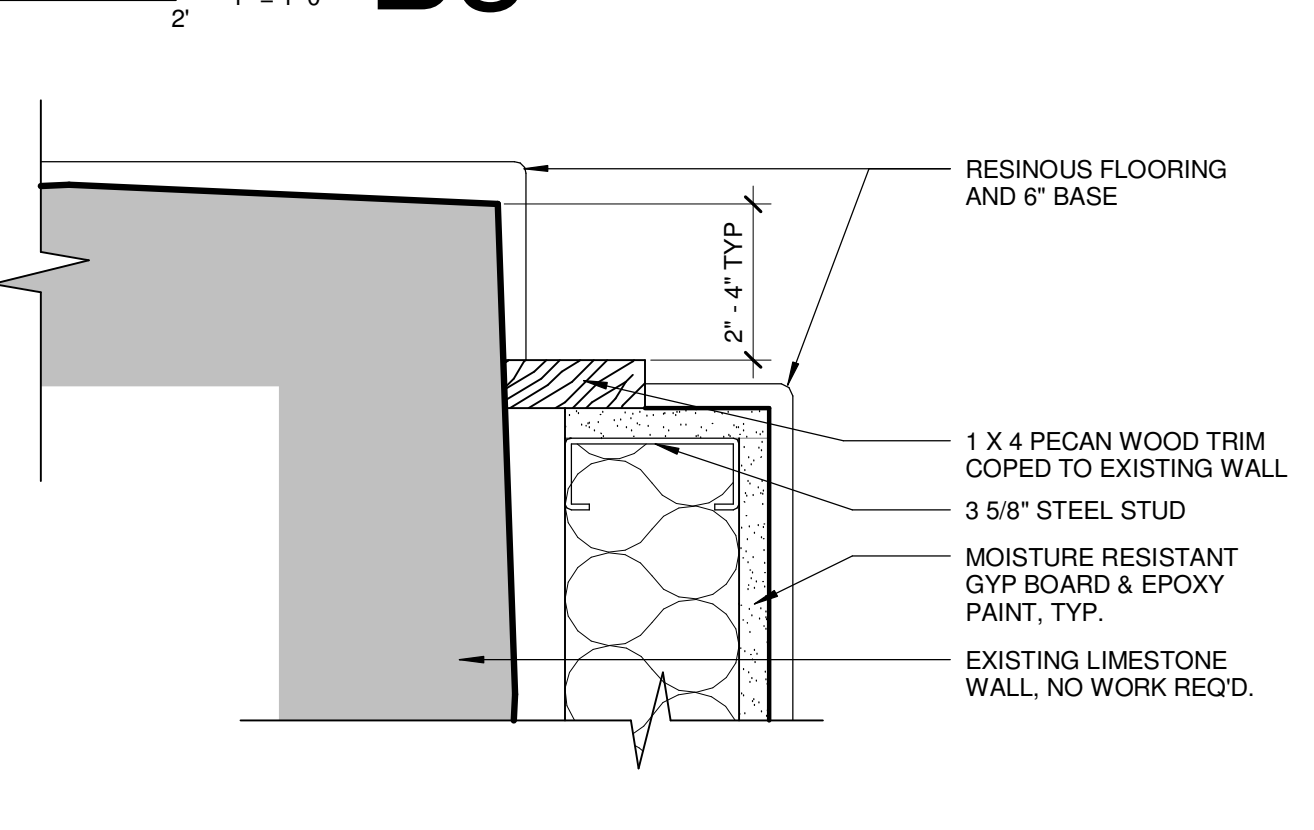
SNACK BAR WEST B2
1/4" = 1'-0"



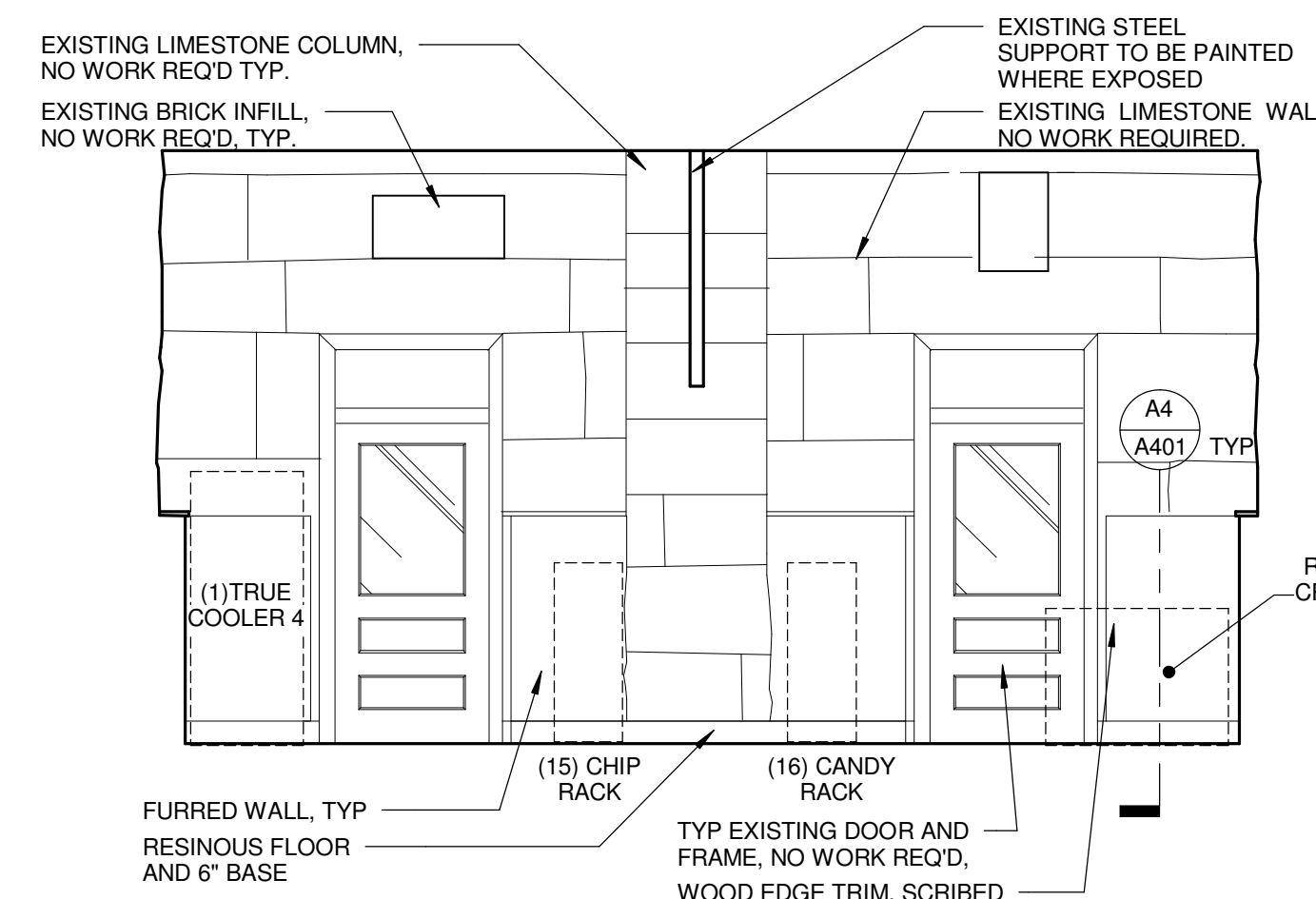
SNACK BAR SOUTH B1
1/4" = 1'-0"



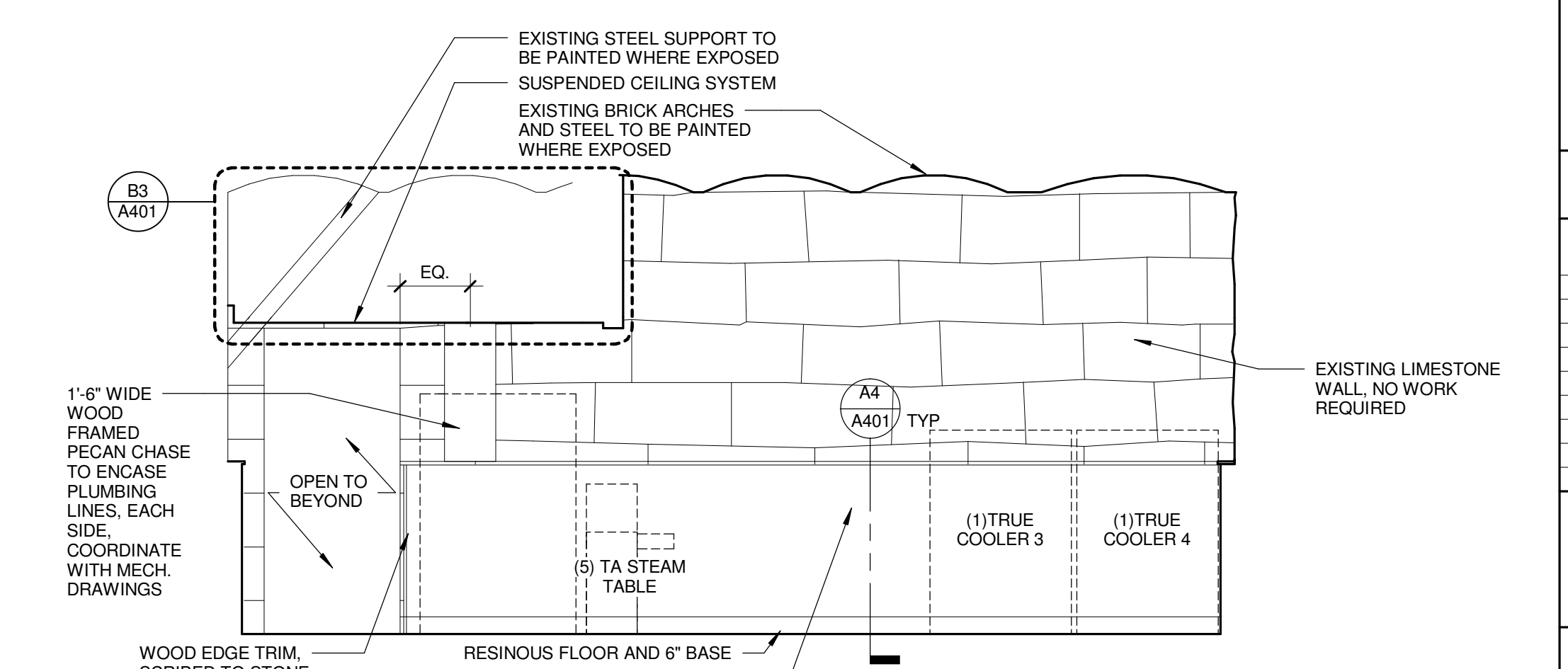
FURRED WALL SECTION A4
1" = 1'-0"



FURRED WALL RETURN A3
3" = 1'-0"



SNACK BAR EAST A2
1/4" = 1'-0"



SNACK BAR NORTH A1
1/4" = 1'-0"

DATE: 09/22/2017
KANSAS DEPARTMENT OF ADMINISTRATION
OFFICE OF FACILITIES & PROPERTY MANAGEMENT
700 SW HARRISON, SUITE 1200
TOPEKA, KS 66603
785-296-4693

KANSAS STATEHOUSE SNACK SHOP
KANSAS DEPARTMENT OF ADMINISTRATION
PROJECT NO. TMA-2075
300 SW 10TH STREET
TOPEKA, KS 66612

TREANORHL
719 SW Van Buren St., Suite 200
Topeka, Kansas 66612
Office: 785.295.0012
www.TreanorHL.com
© TreanorHL, P.A.

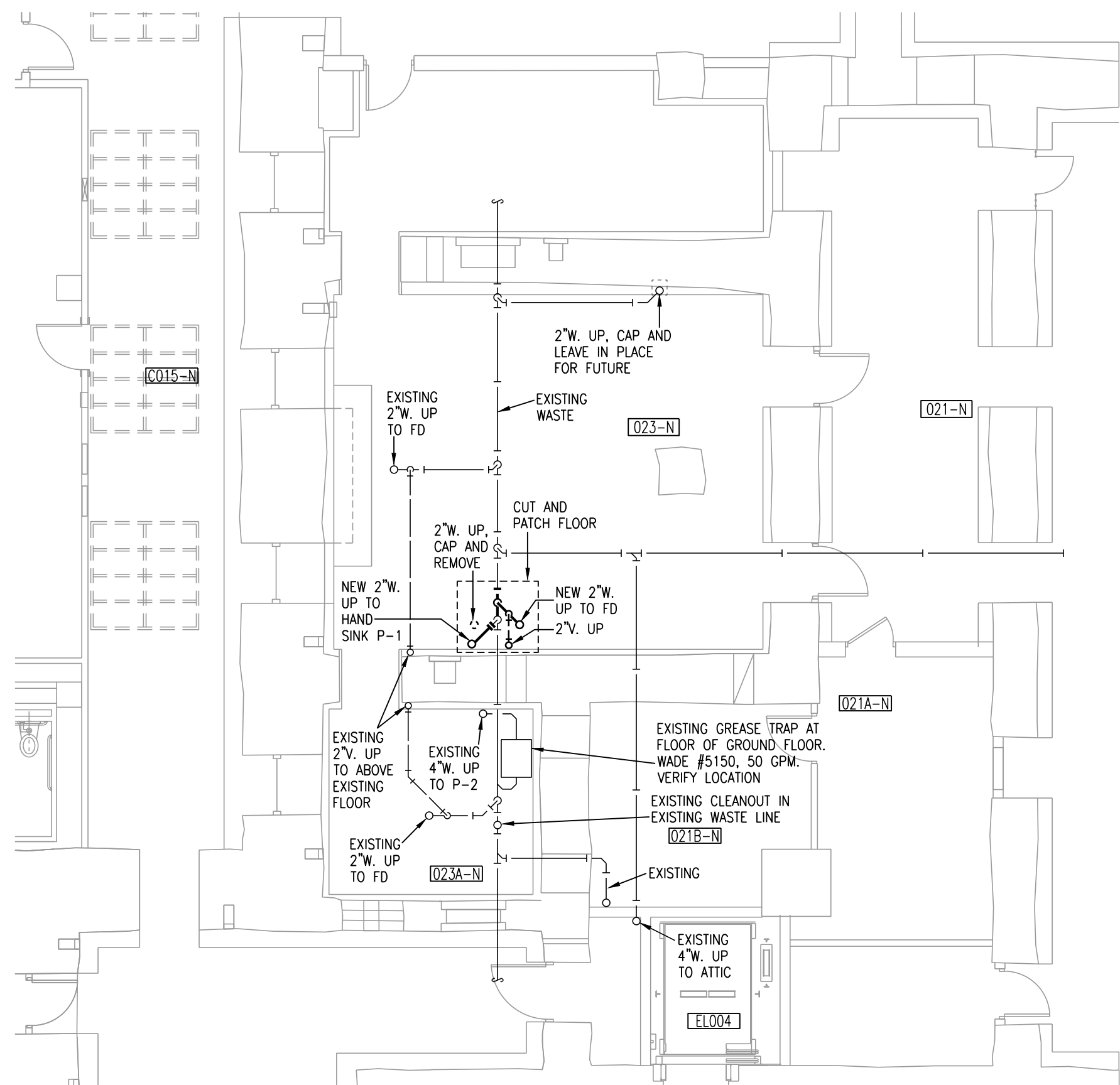


DRAWN BY: MS
CHECKED BY: KVK

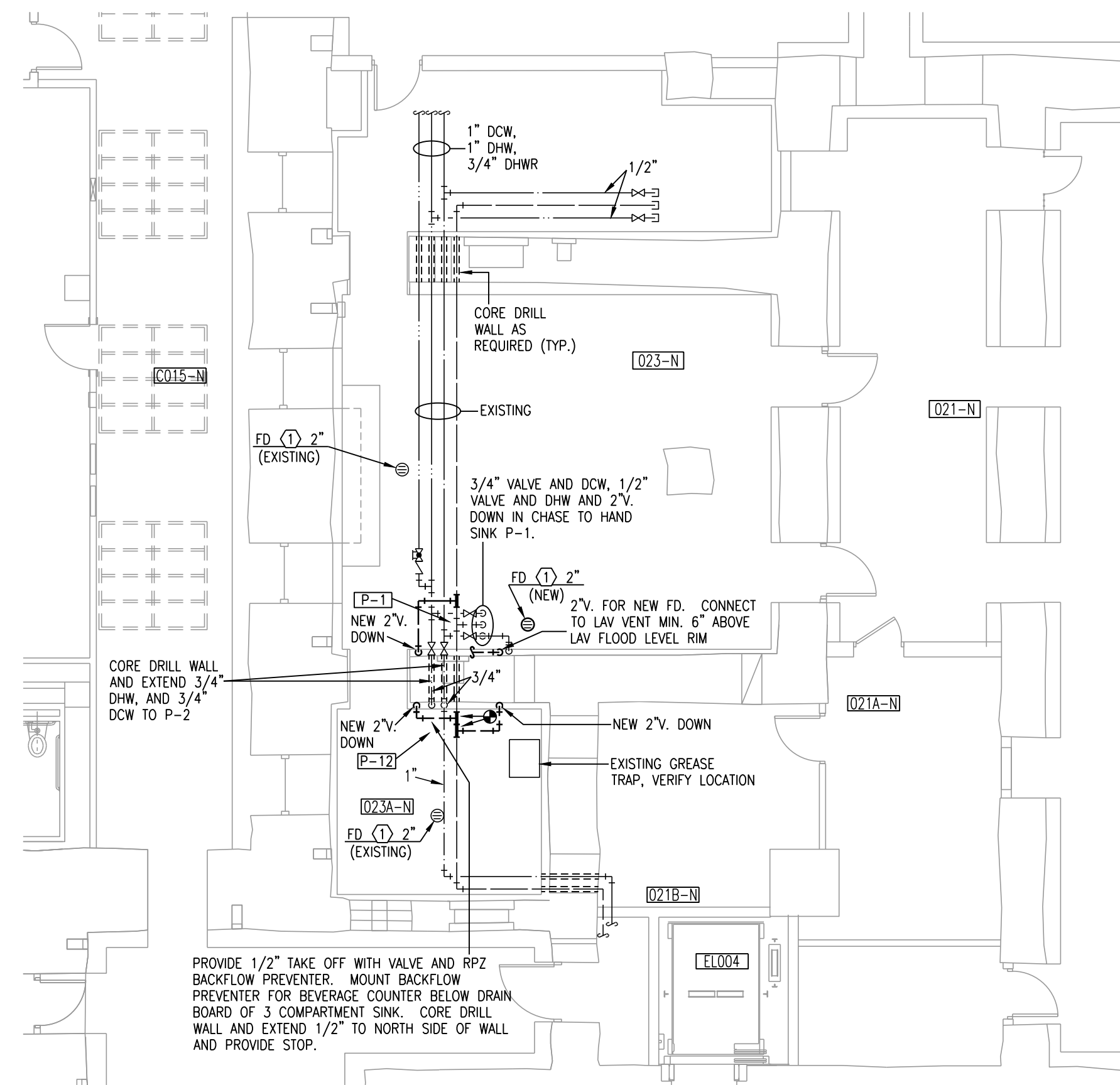
REVISIONS		
NO.	DESCRIPTION	DATE

A401
INTERIOR ELEVATIONS AND DETAILS
TreanorHL NO. HP.16.020.00B

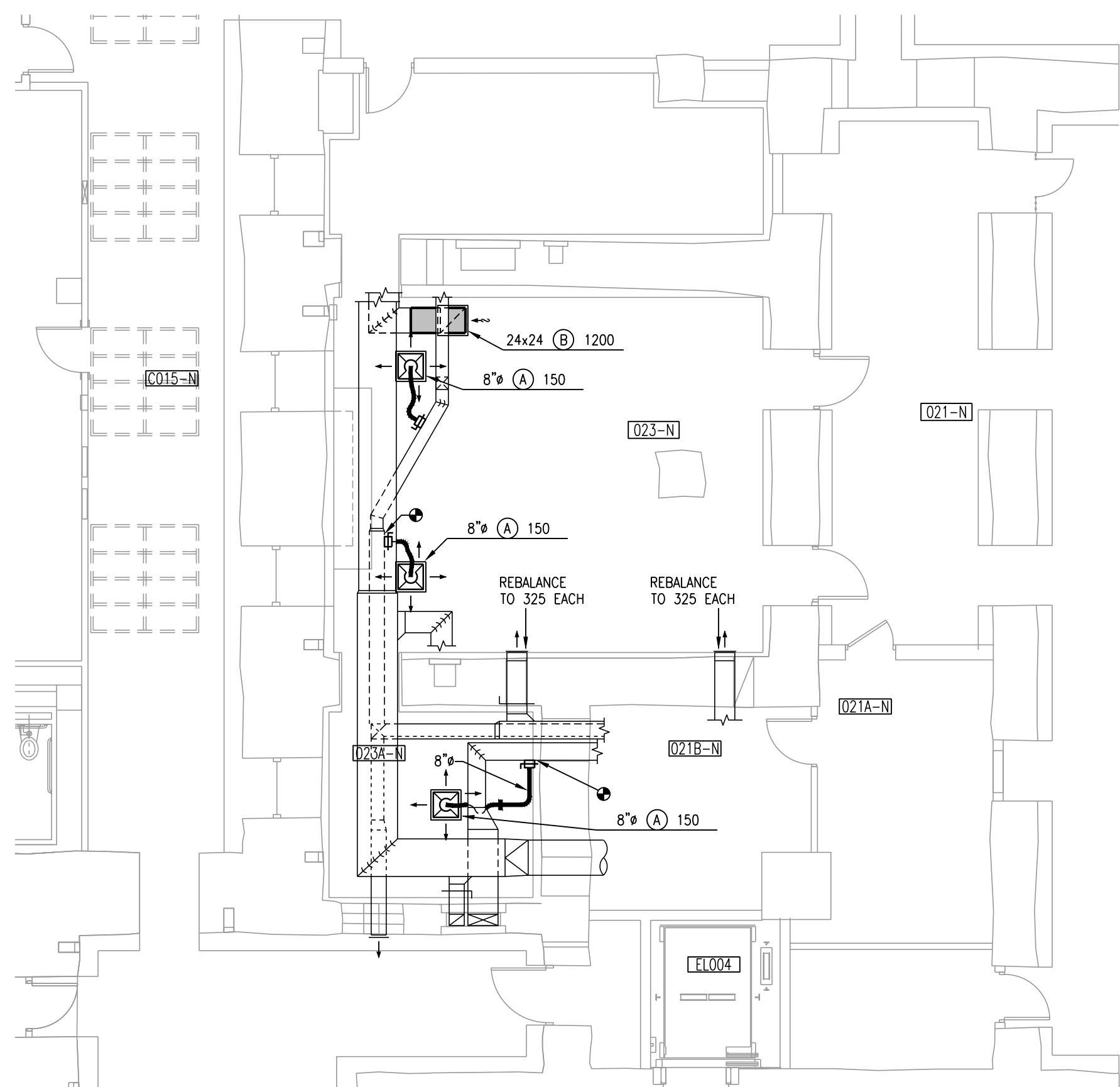
DATE PRINTED: 9/22/2017 2:44:13 PM
FILE PATH: N:\HP\16.020.00B Kansas Statehouse Snack Shop\3_Drawings2_Revit\Snackbar.rvt



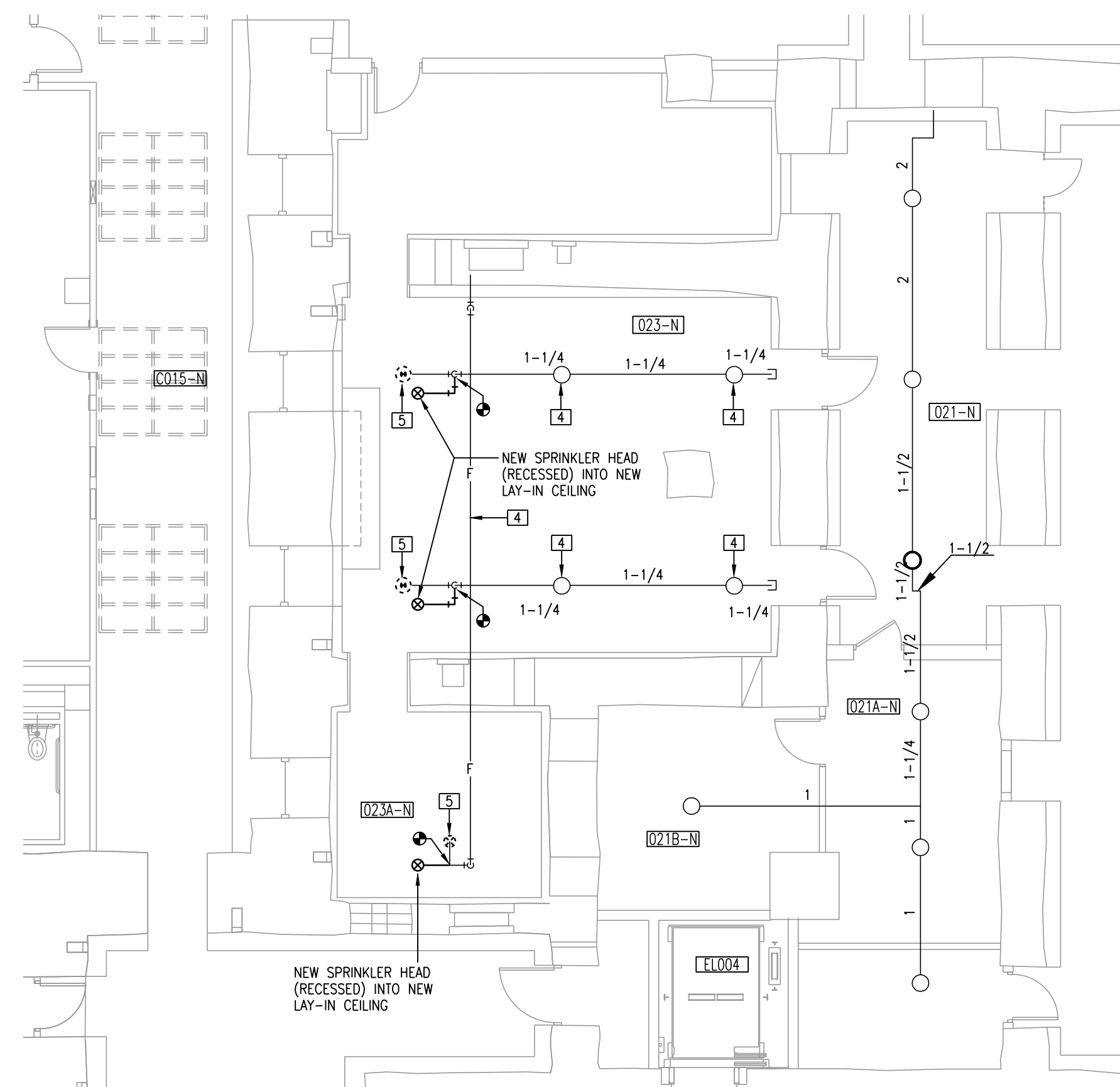
1 PARTIAL GROUND FLOOR PLAN
 1/8" = 1'-0" BELOW-GRADE PLUMBING



2 PARTIAL GROUND FLOOR PLAN
 1/8" = 1'-0" PLUMBING



3 PARTIAL GROUND FLOOR PLAN
 1/8" = 1'-0" HVAC



4 PARTIAL GROUND FLOOR PLAN
 1/8" = 1'-0" FIRE SPRINKLER

NOTES:

1. FIELD VERIFY PANELBOARD AND CIRCUIT NUMBERS. IT IS THE INTENT TO UTILIZE EXISTING SPARE CIRCUIT BREAKERS. PROVIDE ACCURATE ACCOUNTING OF CIRCUIT NUMBERS AND PROVIDE REVISED PANEL BOARD SCHEDULE FOR EACH EFFECTED PANEL.

LEGEND:

- 1 CIRCUIT TO UNSWITCHED PORTION OF LIGHTING CIRCUIT IN PANEL HGN4 USING (3) #12 IN 3/4\".
- 2 REUSE EXISTING BACKBOX AND CONDUIT FOR CONTROL OF NEW LIGHTING.
- 3 MOUNT SWITCH IN FACE OF NEW VERTICAL CHASE.
- 4 EXISTING SPRINKLER AND ASSOCIATED PIPING TO REMAIN.
- 5 EXISTING SPRINKLER TO BE REMOVED. PREPARE FOR INSTALLATION OF NEW SPRINKLER IN NEW LAY-IN CEILING.
- 6 NEW DATA JACK.
- 7 EXISTING NOTIFICATION APPLIANCE TO BE RELOCATED TO CEILING.
- 8 EXISTING NOTIFICATION APPLIANCE TO REMAIN.
- 9 NEW HEAT DETECTOR.
- 10 EXISTING SMOKE DETECTOR TO BE RELOCATED INTO CEILING. CONDUIT/CONDUCTOR AS REQUIRED. MOUNT ON BRICKED ARCHED CEILING IMMEDIATELY ADJACENT (TYP. 6 OF BULK HEAD).

DATE: 09/22/2017

KANSAS DEPARTMENT OF ADMINISTRATION
 OFFICE OF FACILITIES & PROPERTY MANAGEMENT
 700 SW HARRISON, SUITE 1200
 TOPEKA, KS 66603
 785-296-4693

KANSAS STATEHOUSE SNACK SHOP
 KANSAS DEPARTMENT OF ADMINISTRATION
 PROJECT NO. TMA-20175
 300 SW 10TH STREET
 TOPEKA, KS 66612

TREANORHL
 719 SW Von Burg St., Suite 200
 Topeka, Kansas 66612
 Office: 785.235.0012
 Fax: 785.235.0013
 www.treanorhl.com
 © TreanorHL, P.A.

WILLIAM R. BASSETT
 LICENSED PROFESSIONAL ENGINEER
 10530
 9.22.17

DRAWN BY: CAD
 CHECKED BY: WRB

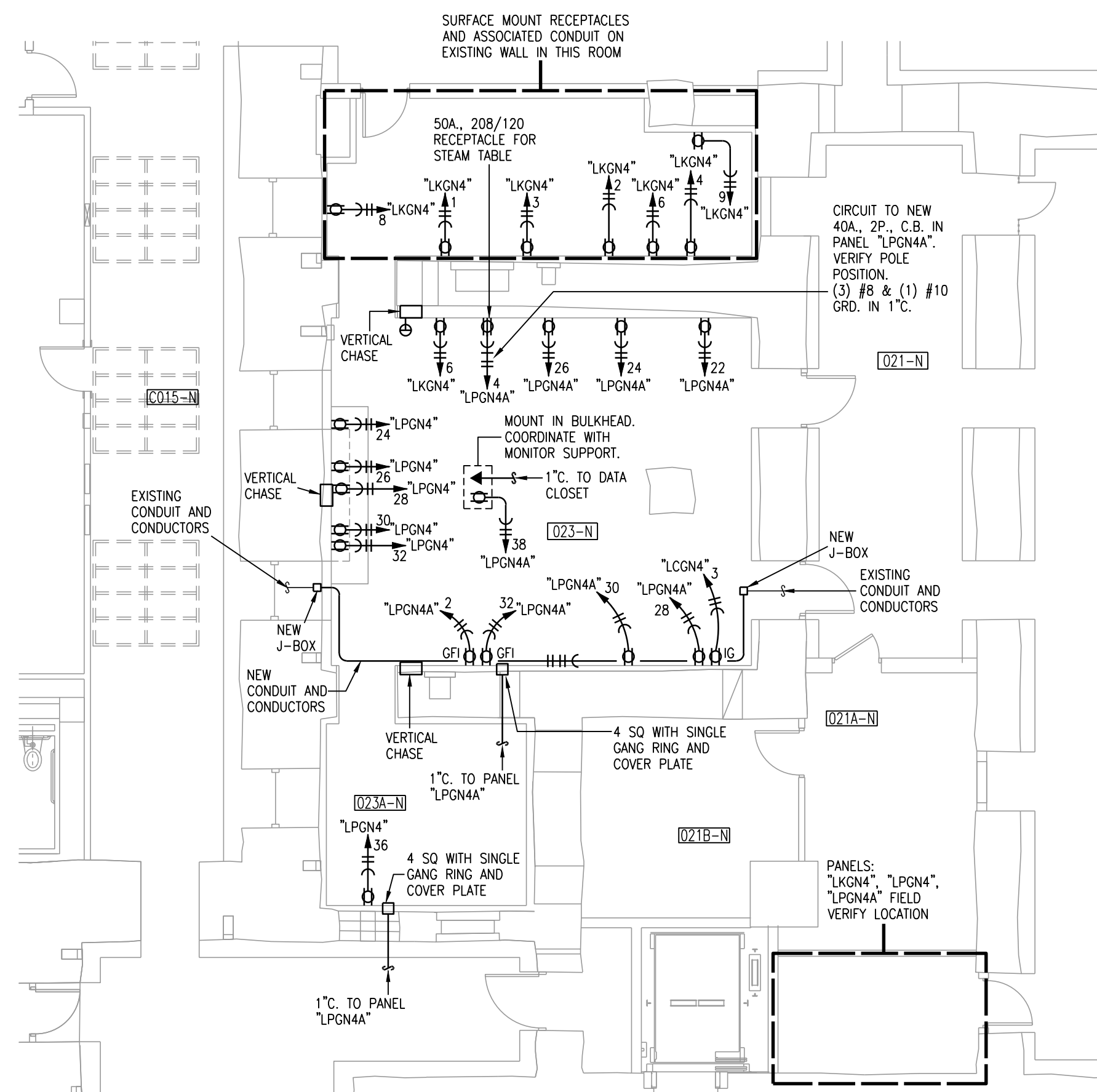
REVISIONS		
NO.	DESCRIPTION	DATE

LS&A
 Latimer Sommers & Associates, P.A.
 CONSULTING ENGINEERS
 3639 SW Summerfield Drive, Suite A
 Topeka, Kansas 66614-3974
 Telephone: (785) 233-3232
 FAX: (785) 233-0647
 Email: lsapa@lsapa.com
 LSA PROJECT NO. 1702030

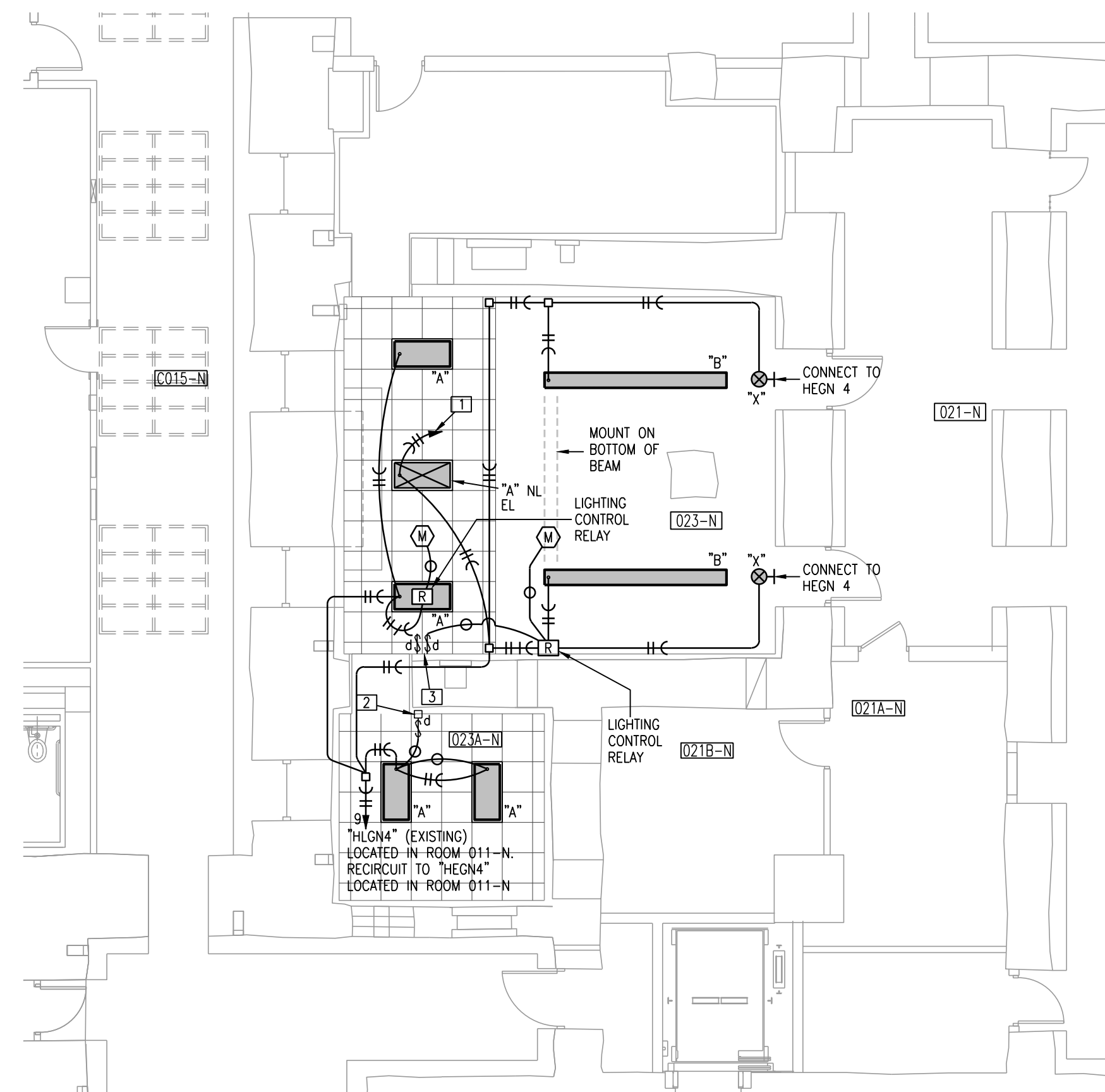
ME201

GROUND FLOOR PLAN - MECHANICAL

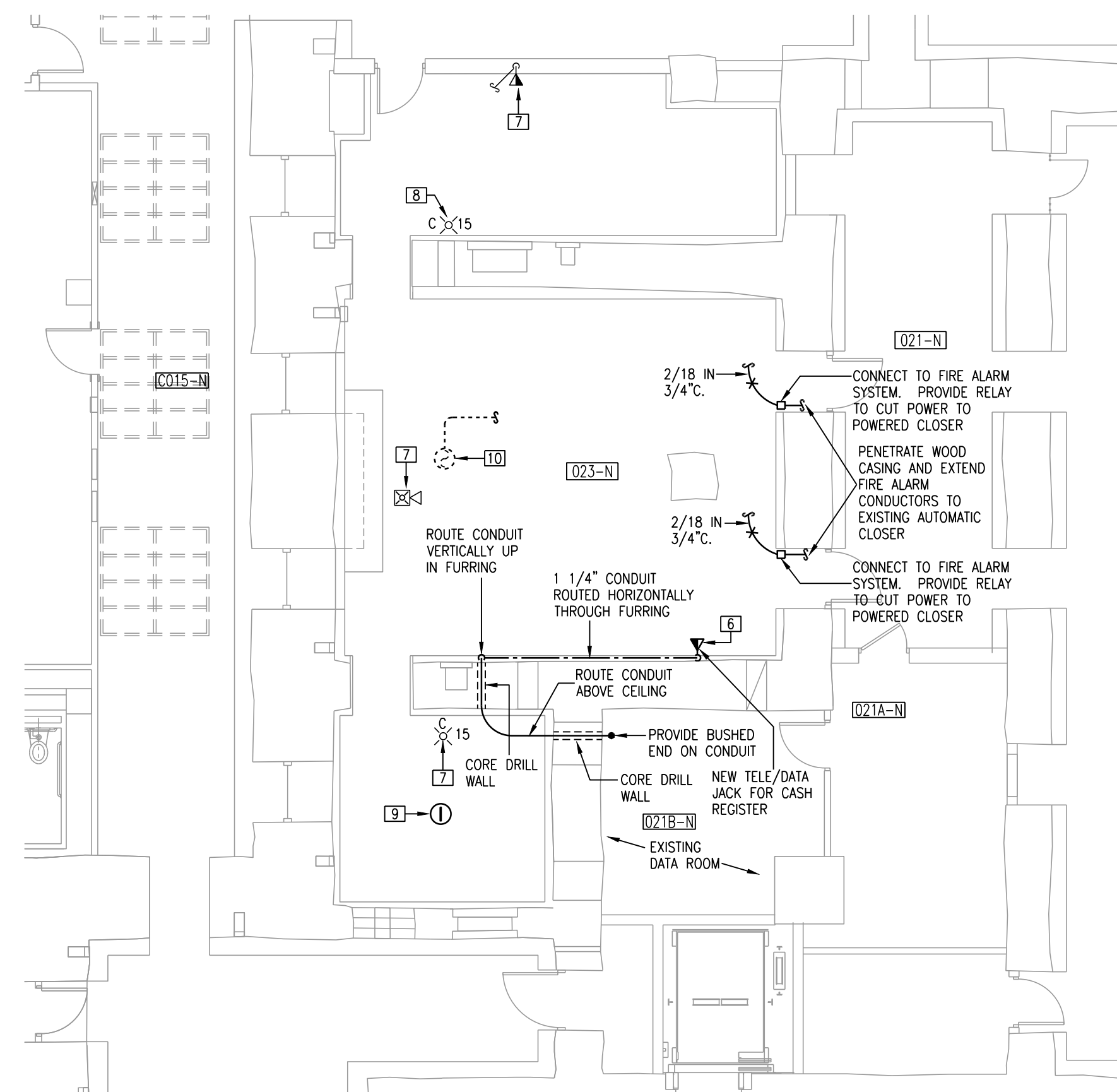
TreanorHL NO. HP.16.020.00B



1 PARTIAL GROUND FLOOR PLAN
 1/8"=1'-0" POWER
 0 4' 8' 16'



2 PARTIAL GROUND FLOOR PLAN
 1/8"=1'-0" LIGHTING
 0 4' 8' 16'



3 PARTIAL GROUND FLOOR PLAN
 1/8"=1'-0" FIRE ALARM/TELECOMMUNICATIONS
 0 4' 8' 16'

NOTES:

- FIELD VERIFY PANELBOARD AND CIRCUIT NUMBERS. IT IS THE INTENT TO UTILIZE EXISTING SPARE CIRCUIT BREAKERS. PROVIDE ACCURATE ACCOUNTING OF CIRCUIT NUMBERS AND PROVIDE REVISED PANEL BOARD SCHEDULE FOR EACH EFFECTED PANEL.

LEGEND:

- CIRCUIT TO UNSWITCHED PORTION OF LIGHTING CIRCUIT IN PANEL HEGN4 USING (3) #12 IN 3/4" C.
- REUSE EXISTING BACKBOX AND CONDUIT FOR CONTROL OF NEW LIGHTING.
- MOUNT SWITCH IN FACE OF NEW VERTICAL CHASE.
- EXISTING SPRINKLER AND ASSOCIATED PIPING TO REMAIN.
- EXISTING SPRINKLER TO BE REMOVED. PREPARE FOR INSTALLATION OF NEW SPRINKLER IN NEW LAY-IN CEILING.
- NEW DATA JACK.
- EXISTING NOTIFICATION APPLIANCE TO BE RELOCATED TO CEILING.
- EXISTING NOTIFICATION APPLIANCE TO REMAIN.
- NEW HEAT DETECTOR.
- EXISTING SMOKE DETECTOR TO BE RELOCATED INTO CEILING. CONDUIT/CONDUCTOR AS REQUIRED. MOUNT ON BRICKED ARCHED CEILING IMMEDIATELY ADJACENT (TYP. 6 OF BULK HEAD).

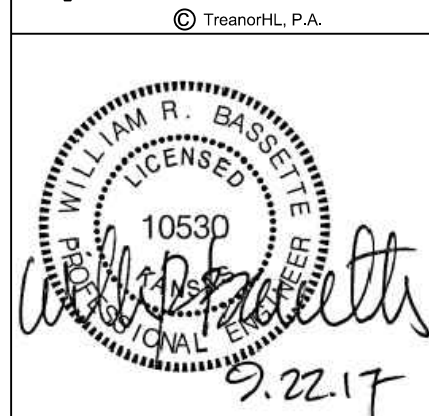
DATE: 09/22/2017

KANSAS DEPARTMENT OF ADMINISTRATION
 OFFICE OF FACILITIES & PROPERTY MANAGEMENT
 700 SW HARRISON, SUITE 1200
 TOPEKA, KS 66603
 785-296-4693

KANSAS STATEHOUSE SNACK SHOP
 KANSAS DEPARTMENT OF ADMINISTRATION
 PROJECT NO. TMA-2075

300 SW 10TH STREET
 TOPEKA, KS 66612

TREANORHL
 719 SW Von Burg St., Suite 200
 Topeka, Kansas 66612
 Office: 785.235.0012
 Fax: 785.235.0013
 www.treanorhl.com



DRAWN BY: CAD
 CHECKED BY: WRB

REVISIONS		
NO.	DESCRIPTION	DATE

LS&A
 Lattimer Sommers & Associates, P.A.
 CONSULTING ENGINEERS
 3639 SW Summerfield Drive, Suite A
 Topeka, Kansas 66614-3974
 Telephone: (785) 233-3232
 FAX: (785) 233-0647
 Email: lsapa@lsapa.com
 LSA PROJECT NO. 1702030

ME202

GROUND FLOOR
 PLAN - ELECTRICAL

LIGHT FIXTURE SCHEDULE									
MARK	MANUFACTURER	MODEL NUMBER	DESCRIPTION	MIN. CRI/ COLOR TEMP	LAMP TYPE	LUMEN OUTPUT	DRIVER	FIXTURE WATTS	REMARKS
"A"	LITHONIA	2VTL4-30L-ADP-EZ1-LP835	RECESSED CEILING AND GRID FIXTURE WITH ACRYLIC PRIZMATIC CENTER LENS	80/3500°K	LED	3,470	DIMMING	27	PROVIDE SLACK WIRES AT OPPOSITE CORNERS OF FIXTURE TIED TO BUILDING STRUCTURE
"B"	MARK 4	S4LID 12 CSQ 1 H 35 2 H 35 BH EZB SCT 277	PENDANT MOUNT NOMINAL 3 1/2" WIDE x 5 1/4" TALL RECTILINEAR LED LIGHTING LUMINAIRE. 12' TOTAL LENGTH SQUARE CANOPY WITH AIRCRAFT CABLE SUSPENSION HARDWARE AND CLEAR POWER CORD.	80/3500°K	LED	15,000	DIMMING	±150	FIXTURE COLOR SELECTED BY ARCHITECT. 277 VOLT OPERATION.
"X"	ST. LOUIS ANTIQUE LIGHTING COMPANY	CD-7900 DCM	EXIT LIGHTING LUMINAIRE. EXTRUDED ALUMINUM FRAME 16 GA ALUMINUM HOUSING LED OPERATION 277 VOLT. RED LED AND LENS. SINGLE FACE WALL MOUNTED. DARK ANTIQUE BRONZE COLOR	N/A	LED	-	NON-DIMMING	-	WALL MOUNT ARCHITECTURAL EXIT LIGHTING LUMINAIRE

PLUMBING FIXTURE SCHEDULE				
MARK	MANUFACTURER	MODEL NUMBER	DESCRIPTION	REMARKS
[P-1]	AMERICAN STANDARD - SINK ZURN - FAUCET PRO FLOW DRAIN, TAILPIECE, AND PTRAP BRASS CRAFT STOPS	0355.012 Z812B4 P155A, PF8872 GBZCR19C	WALL MOUNTED HAND WASH SINK, VITREOUS CHINA BASIN, 4" HIGH BACK SPLASH, CONCEALED ARM CARRIER, DECK MOUNTED 8" SWING GOOSENECK FAUCET WITH QUARTER TURN CERAMIC DISK CARTRIDGES, AND LEVER HANDLES.	PROVIDE BRASS CRAFT CHROME PLATED 1/4 TURN STOPS, ESCUTCHEONS WITH CHROME PLATED FLEXIBLE RISERS. PROVIDE FLOOR MOUNTED CARRIER WITH BLOCK BASES AND RECTANGULAR STEEL UPRIGHTS.
[P-2]	ELKAY - 3 COMP. SINK ZURN - FAUCET PRO FLOW DRAIN, TAILPIECE, AND PTRAP BRASS CRAFT STOPS	WNSF-8354-LR Z842G1 (2 REQUIRED) P155A, PF8872 GBZCR19C	TRIPLE COMPARTMENT SCULLERY SINK: #16 GAUGE, TYPE 302, NICKEL BEARING STAINLESS STEEL, COMPARTMENT 18"x24"x14" DEEP, SEAMLESS DRAWN 1 3/4" RADIUS COVERED CORNER CONSTRUCTION. FULL LENGTH 8" HIGH BACKSPLASH WITH 45 DEGREE SLOPED TOP, FOUR ADJUSTABLE SUPPORT LEGS, WITH LEFT AND RIGHT DRAINBOARDS. WALL MOUNTED SINK FAUCET: 8" SWIVEL SPOUT, CHROME PLATED BRASS CONSTRUCTION AND WASHERLESS CERAMIC DISC VALVE CARTRIDGES.	PROVIDE BRASS CRAFT CHROME PLATED 1/4 TURN STOPS, ESCUTCHEONS WITH CHROME PLATED FLEXIBLE RISERS.

GRILLES, REGISTERS AND DIFFUSERS SCHEDULE					
MARK	MANUFACTURER	DESCRIPTION	DAMPER	FINISH	REMARKS
(A)	E.H. PRICE SPD	ARCHITECTURAL FLAT PANEL FACE DIFFUSER WITH STEEL CONSTRUCTION MODULAR FRAMES FOR 24x24 GRID CEILING IN OPPOSED BLADE DAMPER.	YES	FINAL FINISH. OFF WHITE	
(E)	E.H. PRICE 620	ALUMINUM DOUBLE DEFLECTION WALL REGISTER. PROVIDE COUNTER SUNK SCREWHOLES AND ALUMINUM OPPOSED BLADE DAMPER.	YES	PRIME	

PIPING MATERIAL SCHEDULE									
SYSTEM	SIZE	TYPE	SCHEDULE	ASTM	MATERIAL	FITTINGS	MAX WORKING PRESSURE	TEST PRESSURE	TEST TIME
DOMESTIC WATER	1/2"-1"	L	-	B-88	CU	CU-SJ	125 PSIG	150 PSIG	1 HR
DRAIN, WASTE AND VENT BELOW GRADE	2"-4"	PVC	40	D-2665	PVC	PVC-SW	5 PSIG	10 FT	1 HR
DRAIN WASTE AND VENT ABOVE GRADE	2"-4"	CAST IRON	SERVICE WEIGHT	A-74	CI	CI-HEAVY DUTY NO HUB	5 PSIG	10 FT	1 HR

ABBREVIATIONS:
PVC - POLYVINYL CHLORIDE
CU - COPPER
CI - CAST IRON
SJ - SOLDER JOINT "STA BRIGHT" LEAD FREE

NOTES:
1. NO "TEE DRILL" OR "PRO PRESS". COPPER JOINTS MUST BE SOLDERED.
2. PIPING MUST PASS PRESSURE TEST PRIOR TO BEING INSULATED.

STOP VALVE SCHEDULE						
SYSTEM	SIZE	TYPE	BODY MATERIAL	INTERNAL MATERIAL	PRESSURE RATING	REMARKS
DOMESTIC WATER	1/2"-1"	FULL PORT BALL	BRONZE B584 OR B-62	STAINLESS STEEL STEM AND BALL WITH REINFORCED TEFLON PACKING	600 PSI CWP	CERTIFIED LEAD FREE

FLOOR DRAIN SCHEDULE			
MARK	MANUFACTURER	MODEL NUMBER	DESCRIPTION
FD (1)	WADE	1100STD	DURA-COATED CAST IRON BODY WITH BOTTOM OUTLET, COMBINATION INVERTIBLE MEMBRANE CLAMP AND ADJUSTABLE NICKEL BRONZE STRAINER. STRAINER SHALL HAVE 6" ROUND TOP AND SECURITY SCREWS.

PIPING INSULATION SCHEDULE				
SYSTEM	SIZE	TYPE	THICKNESS	JACKET
DOMESTIC WATER	1/2"-1"	PRE-MOLDED FIBERGLASS PIPE INSULATION	1/2"	ALL SERVICE JACKET

MECHANICAL SYMBOLS LEGEND			
	WATER CLOSET & TYPE (TYP. FOR ALL PLUMBING FIXTURES)		MANUAL DAMPER
	WASTE LINE ABOVE EARTH		BACKDRAFT DAMPER
	WASTE LINE IN EARTH		AUTOMATIC DAMPER
	CLEAN OUT		FIRE DAMPER
	FLUSH FLOOR CLEAN OUT		FIRE/SMOKE DAMPER
	FLUSH GRADE CLEAN OUT		SMOKE DAMPER
	FLOOR DRAIN AND TYPE		GRILLE, REGISTER OR DIFFUSER, SIZE, TYPE & CFM
	ROOF DRAIN		VOLUME EXTRACTOR AND TURNING VANES
	VENT LINE (V)		RETURN, EXHAUST OR FRESH AIR DUCT SECTION UP & DOWN
	DOMESTIC COLD WATER SUPPLY (DOW)		SUPPLY AIR DUCT SECTION UP AND DOWN
	DOMESTIC HOT WATER SUPPLY (DHW)		FLEXIBLE DUCT CONNECTION
	DOMESTIC HOT WATER RETURN (DHW/R)		ROUND OR RECTANGULAR DUCT
	FIRE LINE/STANDPIPE		FLEXIBLE DUCT
	RISE & DROP IN PIPE WITH CUT-OFF VALVE		THERMOSTAT
	REDUCER		
	CHECK VALVE		
	STOP VALVE		
	BALANCING VALVE		
	UNION		
	FLEXIBLE PIPE CONNECTION		

NOTES: ALL SYMBOLS SHOWN ABOVE REFER TO ELECTRICAL SYMBOLS LEGEND FOR ELECTRICAL. MAY NOT APPEAR ON PLANS. SYMBOLS THAT MAY BE SHOWN ON MECHANICAL PLANS.

ELECTRICAL SYMBOLS LEGEND			
	CONDUIT CONCEALED IN CEILING OR WALL		SWITCH - SINGLE POLE
	CONDUIT CONCEALED IN FLOOR SLAB		3-WAY, 4-WAY
	EXPOSED CONDUIT		LIGHT FIXTURE AND TYPE
	HOMERUN - ARROW INDICATES CKT., LINES INDICATE WIRES		EMERGENCY LIGHT FIXTURE WITH BATTERY PACK
	GROUND WIRE		EXIT LIGHT (CEILING OR WALL MOUNTED)
	DUPLEX RECEPTACLE (20 AMP UNLESS NOTED)		FLUSH PANELBOARD (LIGHT & RECEPTACLES)
	TELE/DATA OUTLET *		SURFACE PANELBOARD (LIGHT & RECEPTACLES)
	RELAY		
	JUNCTION BOX		
	THERMOSTAT		

NOTES: ALL SYMBOLS SHOWN ABOVE REFER TO MECHANICAL SYMBOLS LEGEND FOR MECHANICAL. MAY NOT APPEAR ON PLANS. SYMBOLS THAT MAY BE SHOWN ON ELECTRICAL PLANS. * 4x4 BACKBOX WITH SINGLE GANG PLASTER RING AND A 1 1/4" CONDUIT TO ABOVE ACCESSIBLE CEILING.

DATE: 09/22/2017

KANSAS DEPARTMENT OF ADMINISTRATION
OFFICE OF FACILITIES & PROPERTY MANAGEMENT
700 SW HARRISON, SUITE 1200
TOPEKA, KS 66603
785-296-4693

KANSAS STATEHOUSE SNACK SHOP
KANSAS DEPARTMENT OF ADMINISTRATION
PROJECT NO. TMA-A-2075
300 SW 10TH STREET
TOPEKA, KS 66612

TREANORHL
719 SW Von Burg St., Suite 200
Topeka, Kansas 66612
Office: 785.235.0012
Fax: 785.235.0013
www.treanorhl.com
© TreanorHL, P.A.



DRAWN BY: CAD
CHECKED BY: WRB

REVISIONS		
NO.	DESCRIPTION	DATE



ME301

MECHANICAL/ELECTRICAL SCHEDULES

TreanorHL NO. HP.16.020.00B